

# DURAMESH™

non-absorbable polypropylene suturable mesh

MSi is dedicated to evidence-based medicine  
and improved surgical outcomes.

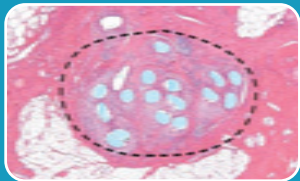
Patient safety is our first priority.

## BIOCOMPATIBILITY

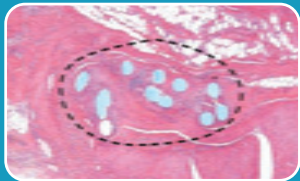
DURAMESH's open-walled,  
hollow core design is unique. It  
allows fibrovascular ingrowth into  
the device during healing.<sup>1</sup>

## H and E Stains Performed at 13 Weeks after Porcine Abdominal Wall Closure

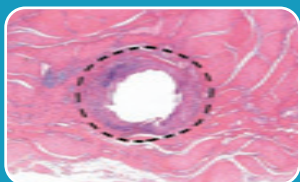
DURAMESH™ elicits a larger zone of biocompatible  
scar formation than a monofilament suture



DURAMESH™ 1



DURAMESH™ 0



USP 1 Monofilament  
Suture

All slides are magnified to the same scale

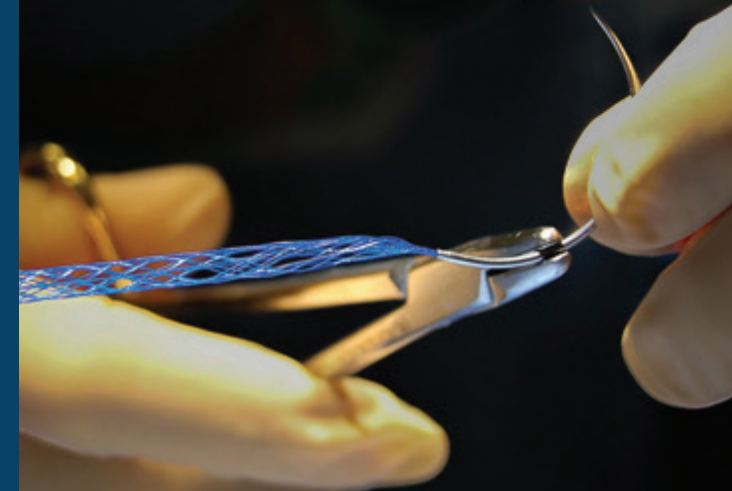


Eurosurgical

Eurosurgical Ltd  
1E Merrow Business Park  
Guildford GU4 7WA  
sales@eurosurgical.co.uk  
01483 456007  
www.eurosurgical.co.uk

DURAMESH™ is a trademark of Mesh Suture Inc.

© Mesh Suture, Inc. 2019



COMING SOON

DURAMESH™ Suture Mesh  
aims to reduce suture pull-through  
for a stronger soft tissue repair

DURAMESH™ is Pending 510(k)  
Not Available for Sale in the USA



meshsuture.com



## SUTURABLE MESH - THE BEST OF BOTH WORLDS

Suturable Mesh combines the desirable principles of a mesh repair with the placement precision of a suture.

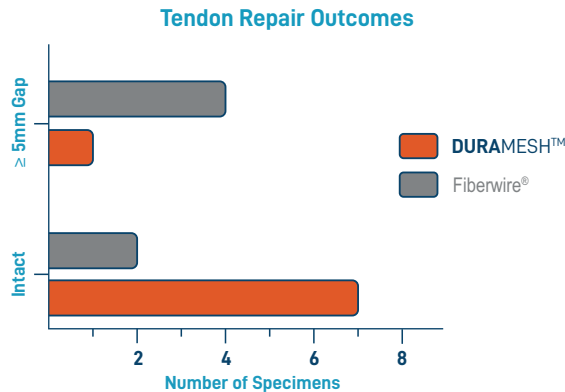
**DURAMESH™** distributes forces at the suture-tissue interface, while dramatically minimizing the amount of implanted foreign material and surgical complexity required for implantation.

### INNOVATIVE DESIGN

**DURAMESH™**'s polyfilament, macroporous mesh body allows fibrovascular ingrowth post-implantation.<sup>1</sup>

**DURAMESH™**'s attached needle provides surgeons with an intuitive solution for targeted mesh placement.

**DURAMESH™**'s novel mesh body revealed less gap formation and more intact repairs in comparison to conventional sutures in an in-vivo rabbit tendon model.<sup>2</sup> The repairs with **DURAMESH™** were twice as strong as standard suture at two weeks.<sup>2</sup>



#### References:

1. Dumanian GA, Tulaimat A, Dumanian Z. Experimental study of the characteristics of a novel mesh suture. *Br J Surg.* 102: 1285-92, 2015.

2. Internal Product Testing

† Lifesize Image

MAF08R0

## POTENTIAL USES

**DURAMESH™** can be used for soft tissue approximation in cases such as **laparotomy closures, open umbilical hernia repairs, hiatal hernias, inguinal hernias, flank hernias, trocar site closures, flap harvest closures, tendon repairs, and joint capsule closures.**

### DURAMESH™ SPECIFICATIONS

**Taperepoint** / **Color: Blue** / **Length: 36"** (91cm)

Mesh Diameter <sup>A</sup>	Needle	USP Size <sup>C</sup> (Metric)	REF Code
1.5mm	DR20 <sup>B</sup> 3/8c 20mm	2-0 (3 Metric)	MSP100
2.6mm	HR22 <sup>B</sup> 1/2c 22mm	0 (3.5 Metric)	MSP200
	HR48 1/2c 48mm	0 (3.5 Metric)	MSP201
3.9mm	HR26 <sup>B</sup> 1/2c 26mm	1 (4 Metric)	MSP300
	HR48 1/2c 48mm	1 (4 Metric)	MSP301
4.1mm	HR26 <sup>B</sup> 1/2c 26mm	2 (5 Metric)	MSP500
	HR50 1/2c 50mm	2 (5 Metric)	MSP501

A: Graphical Representation Only; Not Representative of Filament size or Pore Size

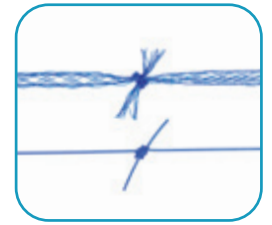
B: Fits in an 8mm trocar

C: Does not meet USP for Diameter

## EASY TO HANDLE, USE & TIE

**DURAMESH™**'s handling and use are equivalent to those of a standard suture, requiring minimal to no training.

Two Square Knots<sup>†</sup>



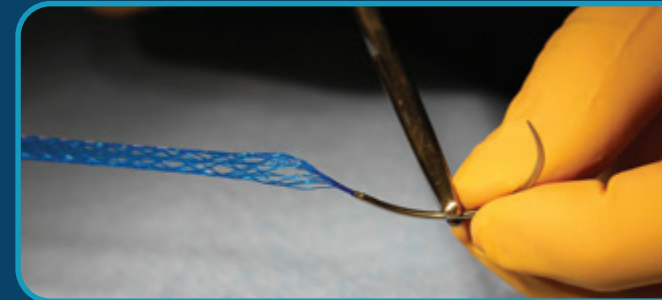
**DURAMESH™ 0**  
vs  
**0 Monofilament**

**DURAMESH™**'s novel design allows it to collapse when tied, resulting in a low profile knot.

## DURAMESH™ SUTURABLE MESH SUITE

The **DURAMESH™** 2-0, 0, Number 1, and Number 2 are used in the same instances as an equivalently sized standard suture.

STANDARD SUTURE USP SIZE	EQUIVALENT DURAMESH USP SIZE
2-0	<b>DURAMESH™ 2-0</b>
0	<b>DURAMESH™ 0</b>
1	<b>DURAMESH™ 1</b>
2	<b>DURAMESH™ 2</b>



## PACKAGING DESIGN

**DURAMESH™**

2-0, 0, Number 1, and Number 2 are Supplied 1 per Box

