



Eurosurgical

Liposuction Equipment
and Cannulae, Tumescant
Infiltration and Lipo-modelling

www.eurosurgical.co.uk

Aspiration Pump

CA.MI Hospivac 400 Aspiration Pump

Electrically driven with a high pressure motor, this machine delivers fast and quiet adjustable pressure up to 760mmhg.
Two 3 litre suction containers with change-over valve and foot pedal.

Order Ref; RE410350-25 Hospivac 400



Medela - Dominant Flex Suction Pump

The Dominant Flex is Medela's latest innovation in high-vacuum suction. One-touch adaptable flow rates allow for a wider variety of procedures to be carried out with just one pump. Designed for use in hospitals, clinics and medical practices, the Dominant Flex is the optimal medical suction pump for all suctioning needs. Fitted with 2 x 2,5 litre bottles and a changeover valve. Optional on/off foot switch is available.

Order Ref; 071.003T

Accessories



FloVac Liner – CA.MI Hospivac

FloVac liners are disposable suction liner bags with rigid lids that fit directly onto the FloVac suction jars. 2 and 3 litre liners are available and are, fitted with overflow filters to prevent damage to the suction systems.

Order REF; 31846 2 litre

Order REF; 31847 3 Litre



Medela Disposable Suction Liners

For use with ALL versions of Medela Aspiration pumps, such as Vario, Basic 30 and Dominant 50.

077.0083	1,5 litre suction liner	(box of 20)
077.0084	1,5 litre suction liner with solidifier	(box of 15)
077.0086	2,5 litre suction liner	(box of 20)
077.0087	2,5 litre suction liner with solidifier	(box of 15)

Suction Tubing



Easy to fit with two flexible connectors that will accommodate all types of push-fit cannula and connections. Available in clear high strength plastic that prevents collapsing even at high aspiration pressure. Packaged 10 per box.

ST30200 – 10	200cm tubing ø10mm (external) 6.2mm (internal) with 11.2mm connector (internal)
ST 30300 -10	300cm tubing ø10mm (external) 6.2mm (internal) with 11.2mm connector (internal)
HPF 1780	400cm reinforced corrugated tubing ø 9mm (external) 5.7mm (internal) with 10mm connector (internal)



Single Use

Single-use, sterile range of Liposuction cannula with easy to hold pre-fixed handle. Available in a wide range of tip styles, length and width cannula, 6 per box.

Ref	ø (mm)	Length (mm)	Tip Holes
LC 31302	3.0	130	2
LC31303	3.0	130	3
LC313024H	3.0	130	24
LC31304H	3.0	130	4
LC31503HVS	3.0	150	3
LC32302	3.0	230	2
LC32303	3.0	230	3
LC32303HVS	3.0	230	3
LC32804H	3.0	280	4
LC328024H	3.0	280	24
LC42302	4.0	230	2
LC42303	4.0	230	3
LC42802	4.0	280	2
LC42803	4.0	280	3
LC428024H	4.0	280	24
LC52802	5.0	280	2
LC52803	5.0	280	3
LC62802	6.0	280	2
LC62803	6.0	280	3



Mac III

Reference	Diameter	Length
DOMA3150	3MM	150MM
DOMA3250	3MM	250MM
DOMA4150	4MM	150MM
DOMA4250	4MM	250MM



Mercedes II

Reference	Diameter	Length
DOME3150	3MM	150MM
DOME3250	3MM	250MM
DOME4150	4MM	150MM
DOME4250	4MM	250MM



Illouz

Reference	Diameter	Length
DOIL3150	3MM	150MM
DOIL3250	3MM	250MM
DOIL4150	4MM	150MM

A range of Single-use, sterile Liposuction cannula in a variety of tip styles, cannula length and width.

These high quality, steel cannulae come with a long shaft that is connected to the handle (sold separately) via a screw fitting, this aids support to the cannula shaft, giving the effect of using a Reusable instrument to this device.

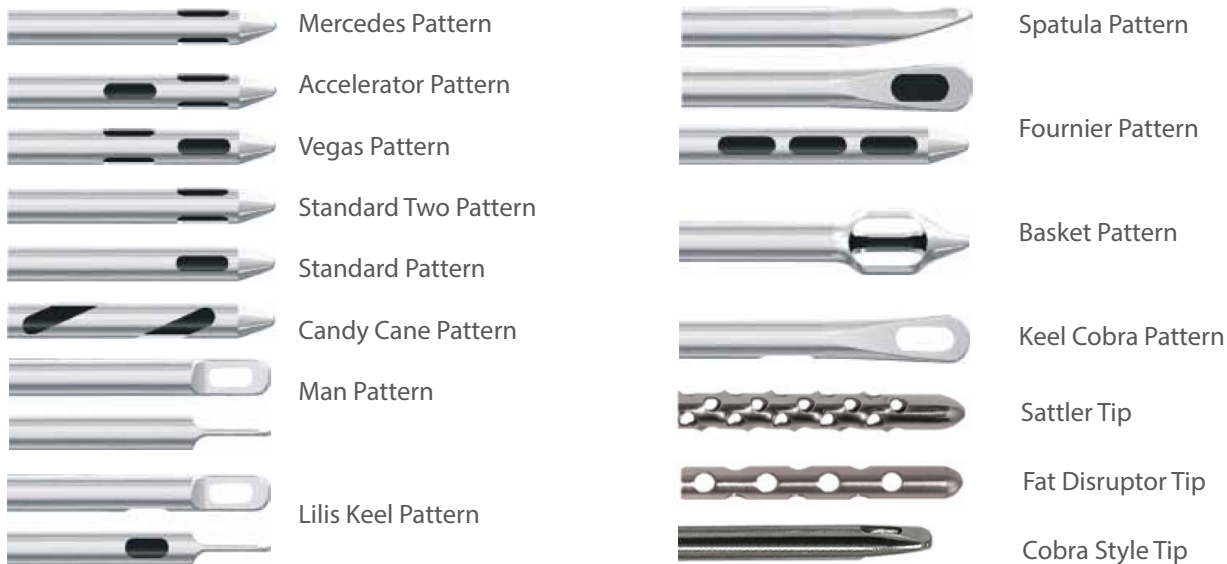
The sterile handle are sold separately and will fit with all three styles;

[Order Ref; DOTO155](#)

Vitruvian Handle



Tip Styles



Vitruvian Liposuction Cannula Popular Patterns

Mercedes

B 8MER-215L	2 x 150mm	Vitruvian Handle
B 8MER-226L	2 x 260mm	Vitruvian Handle
B 8MER-215-SYR	2 x 150mm	Toomey Hub
B 8MER-326L	3 x 260mm	Vitruvian Handle
B 8MER-326-SYR	3 x 260mm	Toomey Hub
B 8MER-332L	3 x 320mm	Vitruvian Handle
B 8MER-415L	4 x 150mm	Vitruvian Handle
B 8MER-426-SYR	4 x 260mm	Toomey Hub
B 8MER-432L	4 x 320mm	Vitruvian Handle
B 8MER-526L	5 x 260mm	Vitruvian Handle

Accelerator

B 8III-226L	2 x 260mm	Vitruvian Handle
B 8III-215-SYR	2 x 150mm	Toomey Hub
B 8III-315L	3 x 150mm	Vitruvian Handle
B 8III-326L	3 x 260mm	Vitruvian Handle
B 8III-332L	3 x 320mm	Vitruvian Handle
B 8III-426-SYR	4 x 260mm	Toomey Hub
B 8III-432L	4 x 320mm	Vitruvian Handle

Fat Disruptor

B 8MBAT-315L	3 x 150mm	Vitruvian Handle
B 8MBAT-326-SYR	3 x 260mm	Toomey Hub

Cobra

B 8COB-326L	3 x 260mm	Vitruvian Handle
B 8COB-426L	4 x 260mm	Vitruvian Handle

Las Vegas

B 8LV-326-SYR	3 x 260mm	Toomey Hub
B 8LV-415L	4 x 150mm	Vitruvian Handle

Spatula

B 8SPA-315L	3 x 150mm	Vitruvian Handle
B 8SPA-315-SYR	3 x 150mm	Toomey Hub
B 8SPA-415L	4 x 150mm	Vitruvian Handle
B 8SPA-415-SYR	4 x 150mm	Toomey Hub



Syringe Lock Stopper

This sterile single-use syringe lock helps maintain suction pressure in the syringe. The Syringe Lock Stopper sits inside the syringe on the axis of the syringe plunger to hold and maintain pressure. Available for 10ml and 50/60ml syringes from Becton Dickinson (BD).

Ref ST10 10ml syringe (box of 25)

Ref ST50 50/60ml syringe (box of 25)



Toomey Luer Lock Adaptor -Single Use

Convert the Toomey syringe with this adaptor to connect Luer Lock Fat Harvesting Cannula. These Single-use adaptors are sterile.

REF TCLL Box of 25



Toomey Syringe Luer Lock Adaptor - Reuseable

Convert the Toomey syringe with this reuseable, autoclavable adaptor to connect Luer Lock Fat Harvesting Cannula.

REF 1340-TOM-LLN-AL



Toomey Syringe Suction Adaptor - Reuseable

Convert a Toomey syringe for continuous suction pressure with this adaptor. This can be used in conjunction with Aquavage to harvest fat through a Toomey Syringe directly into the Aquavage container.

REF 1460-SBA60SS



Toomey Syringe

Sterile 50/60ml Toomey style syringe to fit with Toomey style cannula. Available in a box of 5 syringes.

Ref MSS160TP



Syringe "Snap"

Locks to help maintain syringe pressure, these "snap" locks connect to the back finger rest of the syringe case. Lock is maintained by twisting the plunger of the syringe to hold in place. Reuseable and autoclavable, these are available for 10ml and 60ml syringes and supplied individually.

Ref 1290-TL10CC 10ml Syringe Lock

Ref 1280-TL60cc 60ml Syringe lock



Variable Speed High Flow Infiltration Pump – with LED Fluid Volume Read-Out

- Speed: 1-300 rpm
- Flow rate adjustable from; 25ml - 400ml per minute
- Display: flow rate and volume dispensed
- Advanced technology allows for fluid volume measurements
- Backflow feature minimises fluid leakage
- Pneumatic foot switch activated
- Option to change from "Trigger" or "Gated" foot control

Ref; B89060

Tumescent Infiltration Tubing



Tumescent Infiltration Tubing

High flow Irrigation pump tubing suitable for rotary motor irrigation.

Ref; TP01 pumps (box of 10)



Infiltration Handles – Reusable

Infiltration handle with on/off control and lock. Luer lock fitting at both ends allow for connection to Infiltration tubing (see TP01) and Infiltration cannula (see below)

Order Ref; B 89IH-C With on/off control
 B 89IH-NC Without control



Infiltration Handle

Sterile single-use Infiltration Handle, 175mm in length with luer lock connectors, allows clinician to attach TP01 tubing and Infiltration cannula to handle for easy holding. Ref; PLL180 (box of 10)



Infiltration needle with 12 spiral holes.

Tumescent Infiltration Cannula – Reusable

- B8TI-1215-LL 2.7mm x 15cm Luer Lock
- B8TI-1226-LL 2.7mm x 26cm Luer Lock
- B8TI-1232-LL 2.7mm x 32cm Luer Lock
- B8TI-1236-LL 2.7mm x 36cm Luer Lock
- B8TI-1415-LL 2.0mm x 15cm Luer Lock
- B8TI-1426-LL 2.0mm x 26cm Luer Lock
- B8TI-1432-LL 2.0mm x 32cm Luer Lock
- B8TI-1436-LL 2.0mm x 36cm Luer Lock
- B8TI-1615-LL 1.6mm x 15cm Luer Lock
- B8TI-1620-LL 1.6mm x 20cm Luer Lock
- B8TI-1626-LL 1.6mm x 26cm Luer Lock
- B8TI-1632-LL 1.6mm x 32cm Luer Lock

Infiltration Cannula - Single Use

Sterile, single-use infiltration/irrigation cannula with Luer Lock connector and multiple spiral hole tips, available in the following sizes:

Ref	ø (mm)	Length (mm)	Tip Holes
CI21150	2.1	150	10
CI21250	2.1	250	10
CI25300	2.5	300	10
DOIN2525	2.5	250	5





Lipofilling Kits

Sterile, single-use pre-package kits that contain a selection of cannula for Tumescant infiltration, fat harvesting and fat re-injection; syringes, needles, syringe caps and transfer luer lock adaptors in one easy to use and locate kit.

Practical, affordable and economic. Please see selection of kits below:

KLF 001	ø (mm)	Length (mm)	Tip Holes
1 cannula for fat harvesting	2.1	130	3
2 cannula for reinjection	0.8	70	1
1 luer lock connector	2.5	300	10
1 needle 14g	2.1	40	1
1 needle 21g	0.8	40	1
1 needle 30g	0.3	13	1
4 syringe 10ml luer lock			
3 syringe 1ml luer lock			
1 syringe 3ml luer lock			
4 syringe stopper caps LL			

KLF 002	ø (mm)	Length (mm)	Tip Holes
1 cannula for infiltration	2.5	150	10
1 cannula for fat harvesting	2.1	150	1
1 transfer cannula	3.5	130	
1 cannula for reinjection	0.9	50	1
1 cannula for reinjection	0.9	100	1
2 luer lock connector			
1 needle 18g	1.25	40	1
4 syringe 10ml luer lock			
4 syringe 1ml luer lock			
1 syringe 3ml luer lock			

KLF 003	ø (mm)	Length (mm)	Tip Holes
1 cannula for infiltration	2.5	150	10
1 cannula for fat harvesting	3	150	4
1 cannula for reinjection	1.45	70	1
1 cannula for reinjection	1.25	70	1
1 needle 30g	0.3	13	1
1 needle 21g	0.8	40	1
1 needle 18g	1.25	40	1
4 syringe 10ml luer lock			
4 syringe 1ml luer lock			
4 caps LL			
1 luer lock connector			

KLF 004	ø (mm)	Length (mm)	Tip Holes
1 cannula for fat harvesting	2.1	125	3
1 cannula for reinjection	1.65	80	1
1 Luer lock connector	2.5	300	10
1 needle 16g	1.6	25	1
1 needle 21g	0.8	40	1
1 needle 30g	0.3	13	1
3 syringe 10ml luer lock			
2 syringe 1ml luer lock			
1 syringe 5ml luer lock			
4 syringe caps LL			

KLF 006	ø (mm)	Length (mm)	Tip Holes
1 cannula for infiltration	2.5	150	10
1 cannula for fat harvesting	2.1	150	8
1 cannula for reinjection	1.1	80	1
1 cannula for reinjection	1.25	90	1
4 syringe 10ml luer lock			
4 syringe 1ml luer lock			
4 caps LL			
2 luer lock connector			

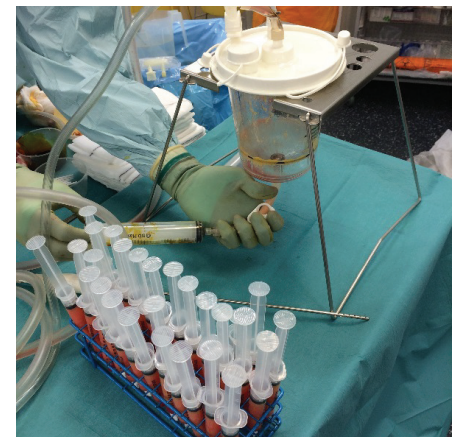
KLF 007	ø (mm)	Length (mm)	Tip Holes
1 cannula for fat harvesting	2.1	150	8
2 cannula for reinjection	0.8	40	1
1 luer lock connector	2.5	300	10
1 needle 14g	2.1	40	1
1 needle 21g	0.8	40	1
4 syringe 10ml luer lock			
4 syringe 1ml luer lock			
4 syringe caps LL			



embase coiffante
cover hub

KLF 000	ø (mm)	Length (mm)	Tip Holes
1 cannula for fat harvesting	2.1	130	8
2 micro-cannula for reinjection	0.8	40	1
1 luer lock connector	2.5	300	10

Excellent NEW kit for Micro-fat harvesting and injection.



AquaVage – High Volume Fat Grafting

AquaVage is a sterile, single-use, closed system for fat harvesting. AquaVage is a container, which can be connected in-line with any aspiration pump. The fat is harvested using your preferred liposuction cannula at reduced flow volumes (18 inHg/500mmHg).

The AquaVage container separates the fat and fluids which allows the surgeon to first remove the fluid portion and then the fat cells from the container via a sterile and closed method.

A sterile 60cc toomey syringe is included along with the canister hoses to facilitate easy removal of the fat and placement into Luer Lock syringes ready for reinjection.

AquaVage offers these major advantages over other fat harvesting systems;

- Can be used with all existing equipment, including wall suction and all types of Liposuction cannula and equipment, including Power Assisted and Ultrasonic Liposuction.

- Closed sterile, single-use system
- No transportation of fat to and from other devices
- No Centrifuge required
- Excellent quality fat, no blocking even with fibrous fat
- No capital equipment required
- Easy to use and operate

Each AquaVage kit contains a sterile Toomey Syringe, an outlet tubing with connectors for Toomey and Luer lock and a sterile suction tubing set to connect to the aspiration device.

Order Ref;

AV1200

AV2000

AVSCS

Aquavage 1,2 litre

Aquavage 2,0 litre

Aquavage Stand (reuseable)



The LipiVage® System

The LipiVage® System is an innovation in fat harvesting that gently separates and concentrates fat cells within a closed, sterile device for improved quality while saving valuable time. This patented disposable, medical device was created to make fat transfer procedures simpler for the surgeons and nursing staff, and to satisfy the need for a less time consuming procedure.

LipiVage® is designed to yield better fat harvesting results over traditional syringe fat transfer harvesting methods by reducing and/or eliminating:

- High vacuum & flocculating pressure levels
- The time fat is outside the body
- The number of transfers
- G-forces of centrifuging
- Over-handling of fat cells
- Risk of infection
- Trauma to fat cells

LipiVage® is a sterile single-use surgical device / syringe, with a luer lock connector, to which any luer lock fat harvesting cannula can be attached. The sterile tubing can be connected to any suction device and the suction should be set at approx 500mm Hg pressure / 66.5 Kpa.

LipiVage® is available as high volume 60ml syringe with internal filter and a transfer luer lock adaptor. Aspirated fat can be easily emptied into smaller luer lock syringes ready to be re-injected, as a closed, sterile system with no need for centrifuging.

Order Ref

D11-0290-108 LipiVage® High Volume 60ml

D11-0290-109 LipiVage® High Volume 60ml, with Twist-Lock Cannula

LipiVage® can be used with standard Luer Lock Fat Harvesting Cannula. Please look at our list of available cannula.





CP141253HV / PICK3518

Verticle style cannula, holes along one (CP141253HV) or two sides of cannula tip (PICK3518)



CP141304H

Coleman tip, an open large hole either side of the distal tip of cannula



CP17853HS

Spiral design – small holes surrounding cannula tip



CP161053HS

Spiral style, three holes at different positions at tip end of cannula



CP141256HMP

Multi Style, smaller holes placed ideal for harvesting fine fat suitable for injection into facial and other delicate areas



The Fat Aspiration Cannula allows passage of aspirant optimally sized for each infiltration procedure.

Fat Harvesting Cannula

An extensive range of excellent quality sterile, single-use cannulae that are packaged individually and available in a box of 10. All cannula are made from medical grade highly polished steel, both internal and external, to prevent or reduce blocking of the cannula during harvesting of the fat and also to reduce friction injury to the skin.

Cannula are available in a wide variety of width (ø mm) from 1.45mm diameter or 17g through to 3.50mm or 11g and in a wide variety of lengths from 85mm to 300mm. Cannula have a wide variance of tip styles, holes and layout as described in the pictures. All cannula are fitted with a Luer Lock standard hub that can be used with all Luer Lock Syringes and LipiVage.

Order Ref	ø (mm)	Length (mm)	Tip	Form Holes
PICK3518	3.5	180	5	Vertical both sides
CP17853HS	1.45	85	3	Spiral
CP161053HS	1.65	105	3	Spiral
CP141253HS	2.1	125	3	Spiral
CP141253HV	2.1	125	3	Spiral
CP141256HMP	2.1	125	3	Multi
CP141304H	2.1	125	4	Vertical
CP122007H	2.8	200	7	Vertical both sides
CP123007H	2.8	300	7	Vertical both sides
CP3015	3	150	2	Coleman tip
CP3023	3	230	2	Coleman tip
CP30154H	3	150	4	Coleman and 2 side
CP301524H	3	150	24	Multi
CP302324H	3.0	230	24	Multi
CP141508H	2.1	150	8	Multi / Vertical 4 each side
CP31503M	3	150	3	Mercedes
CP32303M	3	230	3	Mercedes
CP32303T	3	230	3	Triport
CP32301	3	230	1	Single
CP42301	4	230	1	Single
CP42303M	4	230	3	Mercedes
CP42303T	4	230	3	Triport

Sterile, packaged in a box of 10 individual cannula.
Cannula with open Luer lock hub connector.

Fat Harvesting Cannulae – Reusable

B8FAC-1215-LL12ga x 15cm Luer Lock

B8FAC-1215-LL-CVD12ga x 15cm Luer Lock Curved

B8FAC-1215-SYR12ga x 15cm 60CC Toomey Syringe Hub

B8FAC-1225-LL12ga x 25cm Luer Lock

B8FAC-1225-LL-CVD12ga x 25cm Luer Lock Curved

B8FAC-1415-LL14ga x 15cm Luer Lock

B8FAC-1425-LL14ga x 25cm Luer Lock



Cannula for Injection

Precision made cannula for injection of fluids, dermal fillers and fat. Made from Medical grade steel, polished both internally and externally, to reduce cannula blocking and damage to the skin due to friction. Cannula cause less bleeding (haematoma) and injury to capillaries and result in less trauma and pain when used, compared to needles.

Micro-Cannula

Available in a range of sizes from 18g (1.24mm) to 30g (0.31mm) and a variety of cannula length, with Luer Lock hub.

Box of 20 units, packaged sterile

Order Ref	ø (mm)	Length (mm)
MI18110	18g (1.24mm)	110
MI1870KR	18g (1.24mm)	70
MI2170KR	21g (0.81mm)	70
MI2290KR	22g (0.71mm)	90
MI2270KR	22g (0.71mm)	70
MI2250KR	22g (0.71mm)	50
MI2370KR	23g (0.63mm)	70
MI2350KR	23g (0.63mm)	50
MI2450KR	24g (0.56mm)	50
MI2438KR	24g (0.56mm)	38
MI2550KR	25g (0.51mm)	50
MI2650KR	26g (0.46mm)	50
MI2638KR	26g (0.46mm)	38
MI2625KR	26g (0.46mm)	25
MI2740KR	27g (0.41mm)	40
MI3025	30g (0.31mm)	25

Fat Injection Cannula – Single-Use

A range of precision made cannula, with polished steel, both externally and internally to prevent the clogging and blocking of the cannula during injection of more viscous material, such as fat. These cannula are available with a Luer Lock hub and individually Sterile, packaged in a box of 10.



Example of 90° cannula hub



Example of 45° cannula hub

Order Ref	ø (mm)	Length (mm)	Tip Holes	Form
F9010070	1,0	70	1	90° side exit
F9012070	1,2	70	1	90° side exit
F9015070	1,5	70	1	90° side exit
F9015100	1,5	100	1	90° side exit
F9020100	2,0	100	1	90° side exit
F9027150	2,7	150	1	90° side exit
CF14790	1,45	70	1	90° side exit
CF151045	1,65	100	1	45° side exit
CF202290	2,1	220	1	90° side exit
CF202345	2,1	230	1	45° front exit
CF301990	3,0	190	1	90° side exit

Fat Injection Cannulae – Reusable



Style I features a blunt closed end distally, with a single opening.

B8FIC-I-1415-LL14ga x 15cm Luer Lock
 B8FIC-I-1420-LL14ga x 20cm Luer Lock
 B8FIC-I-1425-LL14ga x 25cm Luer Lock
 B8FIC-I-167-LL16ga x 7cm Luer Lock
 B8FIC-I-169-LL16ga x 9cm Luer Lock
 B8FIC-I-187-LL18ga x 7cm Luer Lock
 B8FIC-I-189-LL18ga x 9cm Luer Lock
 B8FIC-I-195-LL19ga x 5cm Luer Lock w/Stylette
 B8FIC-I-CC1415-LL14ga x 15cm Luer Lock (Concave)
 B8FIC-I-CC1610-LL16ga x 10cm Luer Lock (Concave)
 B8FIC-I-CC169-LL16ga x 9cm Luer Lock (Concave)
 B8FIC-I-CV1415-LL14ga x 15cm Luer Lock (Convex)
 B8FIC-I-CV1610-LL16ga x 10cm Luer Lock (Convex)
 B8FIC-I-CV169-LL16ga x 9cm Luer Lock (Convex)

Fat Injection Style II:



Style II features a blunt end, but is more open distally and laterally than Style I.

B8FIC-II-167-LL16ga x 7cm Luer Lock
 B8FIC-II-169-LL16ga x 9cm Luer Lock
 B8FIC-II-187-LL18ga x 7cm Luer Lock
 B8FIC-II-189-LL18ga x 9cm Luer Lock
 B8FIC-II-CC1610-LL16ga x 10cm Luer Lock (Concave)
 B8FIC-II-CC169-LL16ga x 9cm Luer Lock (Concave)
 B8FIC-II-CV1610-LL16ga x 10cm Luer Lock (Convex)
 B8FIC-II-CV169-LL16ga x 9cm Luer Lock (Convex)

Toledo "V" style Fat Injection Cannula:



Has an atraumatic "V" channel at the distal tip. For tissue undermining.

B8FIC-V-1215-LL12ga x 15cm Luer Lock
 B8FIC-V-1225-LL12ga x 25cm Luer Lock
 B8FIC-V-1415-LL14ga x 15cm Luer Lock
 B8FIC-V-1425-LL14ga x 25cm Luer Lock

Doctors Centrifuge



Made specifically for Fat Harvesting to assist the separation of the fat / fluid / oil layers, with adjustable speed and time controls, this easy to operate Medical Grade Centrifuge allows for accurate spin speed and time. With a lockable lid and 6 x 10ml syringe cylinder chambers that are removeable and autoclavable. Syringe holder is also removable and easy to clean and autoclave if required.

Order Ref; CES-10

Table Operated Centrifuge



This easy to use and operate Centrifuge can be fixed by means of the adjustable clamp, to a robust surface. The 4 x 10ml syringe holders allow for a manual Centrifuge of fat in a more gentle manner, which prevent damage to the fat cells, whilst separating the fat / fluid / oil layers.

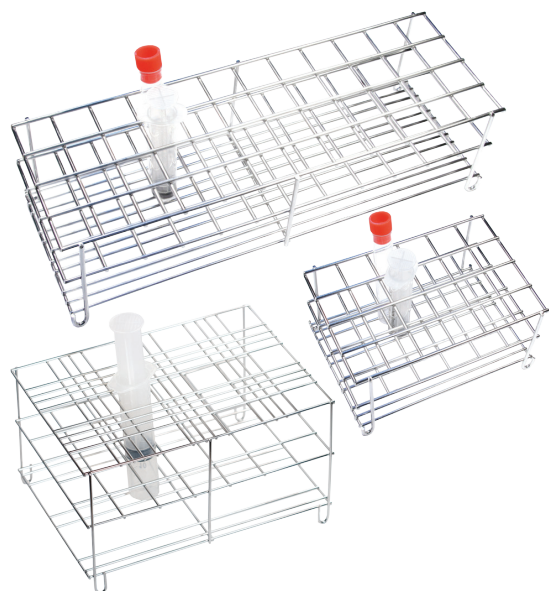
Order Ref; CM10

Reuseable 10ml Syringe Tube Holders for Centrifuge



Compatible with CES -10 and coleman type system.

Order Ref; HTCES-10 (Pack of 6)



Syringe Racks Reuseable

Reuseable and autoclavable steel syringe racks for holding syringes of harvested fat prior to injection. Available in the following sizes:

Order Ref	Rack	Syringe Size Holes	
LPEI0406H70	4 x 6	10ml	24
LPEI0412H70	4 x 12	10ml	48
POR3450	3 x 4	50ml	12



Syringe Rack Single Use

Sterile, single-use syringe rack that holds up to 6 syringes from 1-10ml in size.

Order Ref; LX54300 (10 per box)



Luer Lock Syringe Cap

Fits all standard luer lock syringes.

Order Ref; MC1711 (box of 100)



Luer Lock Transfer Adaptor

Male to male luer lock syringe connector to transfer fat from one syringe to another.

Order Ref; 993922T (box of 100)



Fat Injection Gun

For accurate injection of fat, this reuseable and autoclavable gun fits 3ml BD luer lock syringes for accurate placement of fat.

Order Ref; RU1030



EuroSurgical

Liposuction Equipment and Cannula, Tumescant Infiltration and Lipo-modelling

Merrow Business Park,
Guildford, Surrey GU4 7WA

T: +44 (0)1483 456 007
E: sales@euroSurgical.co.uk

www.euroSurgical.co.uk