

Diamond-Tip[®] *Rasps*

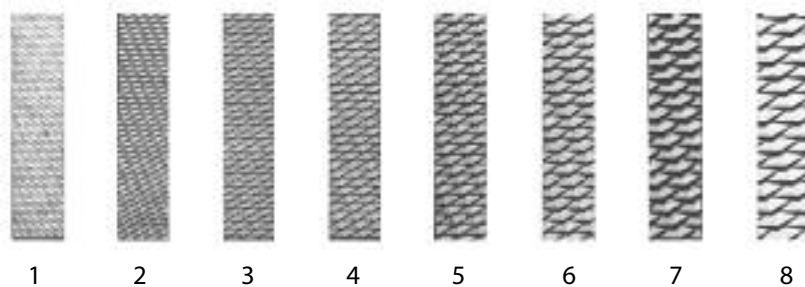
Diamond-Tip[®] Rasps feature a patented tungsten carbide cutting surface. The major advantages of these rasps over conventional models are their superior cutting ability, increased longevity and clean, precise cut. Diamond-Tip[®] Rasps are backed by a one- year guarantee against wear. (U.S. Patent numbers 4,625,725, Des. 282,205 Des. 302,297 Des. 302,298)

Diamond-Tip® Rasps

Features and Benefits



Insert Grit Sizes



Diamond-Tip®

Fomon

U.S. Patent 4,625,725, Des. 282,205.

Double-ended provides two working surfaces with superior cutting capabilities for greater versatility.



32-3002	8-1/2"	21.5 cm	#1 and #2
32-3004	8-1/2"	21.5 cm	#3 and #4
32-3006	8-1/2"	21.5 cm	#5 and #6
32-3008	8-1/2"	21.5 cm	#7 and #8

Diamond-Tip®

Parkes

U.S. Patent 4,625,725

Large handle provides firm, controlled grip with superior cutting capabilities.



32-3011	8"	20.5 cm	#1
32-3012	8"	20.5 cm	#2
32-3013	8"	20.5 cm	#3
32-3014	8"	20.5 cm	#4
32-3015	8"	20.5 cm	#5
32-3016	8"	20.5 cm	#6
32-3017	8"	20.5 cm	#7
32-3018	8"	20.5 cm	#8

Diamond-Tip®

Lamb

U.S. Patent 4,625,725

Ergonomic handle design for secure grip and maximum control.



32-3041	9"	23 cm	#1
32-3042	9"	23 cm	#2
32-3043	9"	23 cm	#3
32-3044	9"	23 cm	#4
32-3045	9"	23 cm	#5
32-3046	9"	23 cm	#6
32-3047	9"	23 cm	#7
32-3048	9"	23 cm	#8

Note: Rasps are manufactured with a pull cutting action. Special rasps can be ordered for an additional charge.

Fine Instruments and Video Equipment

Diamond-Tip®

Maltz

U.S. Patent 4,625,725

Short, flat handle with superior cutting capabilities.

32-3022	6-1/2"	16.5 cm	#2
32-3023	6-1/2"	16.5 cm	#3
32-3024	6-1/2"	16.5 cm	#4
32-3025	6-1/2"	16.5 cm	#5
32-3026	6-1/2"	16.5 cm	#6



Diamond-Tip®

Webster Glabella

U.S. Patents Des. 302,297, Des. 302,298

Bi-directional (push-pull) cut allows for greater flexibility and control.

32-3120	8-1/2"	21.5 cm	Coarse
---------	--------	---------	--------



Diamond-Tip®

Glabella

U.S. Patents Des. 302,297, Des. 302,298

Down-cutting rasp with small-radius tip for precise sculpturing.

32-3105	8-1/2"	21.5 cm	Medium
32-3110	8-1/2"	21.5 cm	Coarse



Diamond-Tip®

Glabella, Large

U.S. Patents Des. 302,297, Des. 302,298

Large radius tip for superior cutting ability.

32-3115	8-1/2"	21.5 cm	Coarse
---------	--------	---------	--------



Stainless Steel

Peet

Finishing rasp utilizing a diamond particle surface to create a smooth result.

88-3200	7-1/2"	19 cm	Straight
88-3201	7-1/2"	19 cm	Curved



Diamond-Tip®

Miller Bone File

U.S. Patent 4,625,725

Excellent cutting ability. Used primarily for removing ridges.

32-3051	7"	18 cm	#1
32-3052	7"	18 cm	#2
32-3053	7"	18 cm	#3
32-3054	7"	18 cm	#4
32-3055	7"	18 cm	#5
32-3056	7"	18 cm	#6



Diamond-Tip®

McCullough Rasp

U.S. Patent 4,625,725

Broad rasp designed for the simultaneous and even removal of hard tissue. Ergonomic handle design for secure grip and maximum control. Specify grit pattern when ordering.

32-3060	9"	23 cm
---------	----	-------



Diamond-Tip®

Aston Reduction

U.S. Patent 4,625,725

Specially designed rasps with blades set at optimal angle to create a cutting surface of unsurpassed sharpness. Eliminates irregularities that can be caused when scissors are used.

32-3100	set - includes both rasps
32-3101	8" 20.5 cm fine
32-3102	8" 20.5 cm coarse
32-5729	5-1/2" Angled Scissors (see page 28)



Surgical Endoscopic Instruments and Equipment

Diamond-Jaw®

Gunter

Available in two unique jaw surfaces. Model 32-2210 features a Diamond-Jaw® tungsten carbide insert with large pyramid-shaped teeth. Model 32-2211 features semi-sharp ridges cut longitudinally into a tungsten carbide insert.

32-2210	7"	18 cm	Diamond-Jaw®
32-2211	7"	18 cm	Longitudinal jaw®



Diamond-Jaw®

Gorney

Features two unique jaws with a smooth guard. One jaw features a Diamond-Jaw® tungsten carbide insert with large pyramid-shaped teeth. The other jaw has semi-sharp ridges cut longitudinally into a tungsten carbide insert. The smooth guard fits over either jaw.

32-2215	8"	20.5 cm	Angled
32-2217	8"	20.5 cm	Straight
32-2218	Guard only		



Diamond-Jaw®

Bernstein

This instrument features arched shanks. Additionally, the morselizer features two unique jaws with a smooth guard (cover). One jaw features a Diamond-Jaw® tungsten carbide insert with large pyramid-shaped teeth. The other jaw has semi-sharp ridges cut longitudinally into a tungsten carbide insert. The smooth guard fits over either jaw.

32-2213	8-1/4"	21 cm	
32-2214	Guard only		



Stainless Steel

Sheen Crusher

Unique top design allows for variable thickness.
Interchangeable top design allows for longitudinal scoring or true crushing.

88-7226



Stainless Steel

Sheen Morselizer

Unique twin-post design for superior stability
for larger tissue.

88-9887



Stainless Steel

Jost Crusher/Morselizer

All surfaces are interchangeable to allow for a variety
of possible results, from parallel line cuts to true
membranous-like tissue. Versatile and more sensitive
than standard crushers.

88-7230



Stainless Steel

Cottle Crusher

Useful for reforming soft tissue prior to re-insertion.
Tissue is placed in groove, upper arm is then closed
and struck with a mallet.

88-7227

