

Nancy L. Guttormson, M.D., F.A.C.S.  
James H. Andrisevic, M.D., F.A.C.S.  
Burnsville, MN

## INSORB® Absorbable Subcuticular Skin Stapler

### A TIME-EFFECTIVE COSMETIC SKIN CLOSURE SOLUTION FOR THE MASTECTOMY PATIENT

In our search for a more efficient wound closure modality, we have evaluated the use of a novel absorbable subcuticular skin stapler (INSORB Subcuticular Skin Stapler, Incisive Surgical, Inc., Plymouth, MN) for mastectomy patients. Our experience includes over 30 patients during a 2 year period. The resulting incisional closures were observed immediately post-surgery and generally at a one-week follow-up visit. The series of photos from surgery to 4 months demonstrates the typical post operative wound appearance with absorbable staples (Fig. 3-7). The absorbable staples demonstrated equivalent efficacy compared to subcuticular suturing, yet with the speed of metal staples. Closures with the absorbable staples were well approximated and secure with good immediate and sustained eversion (Figs. 3 and 6). These are low maintenance wounds with no apparent immediate or late inflammatory reaction as is often seen with suture and suture knots (Figs. 5 and 6). The subcuticular skin stapler resulted in immediate pleasant appearance to the surgical scar and ultimately excellent cosmesis with thin flat scars and no notable discoloration (Fig. 7). We found that the single operator technique with INSORB Stapler and INSORB Forceps is simple, comfortable, and time efficient. Skin closure time for an incision was approximately 1 to 2 minutes, depending on wound length. This amounts to about a 10 - 15 minute decrease in closure time for a bilateral mastectomy when compared to subcuticular suture closure. With the subcuticular skin stapler, we appreciate the benefit of a rapid and cosmetic closure that is comfortable for the patient and presents a good aesthetic appearance.

#### SURGICAL TECHNIQUE

Fig. 1 Absorbable deep supporting stays are placed to take up tension and align the incision for accurate and easy staple placement.



Fig. 2 Single operator technique utilizes a double Adson forceps with closure times under 2 minutes per incision.



Fig. 3 Staples are placed at about 7mm intervals and form a secure uniform approximation with pronounced eversion.



Fig. 4 We prefer an occlusive dressing and wound protection which is achieved with a double layer of steri-strips.



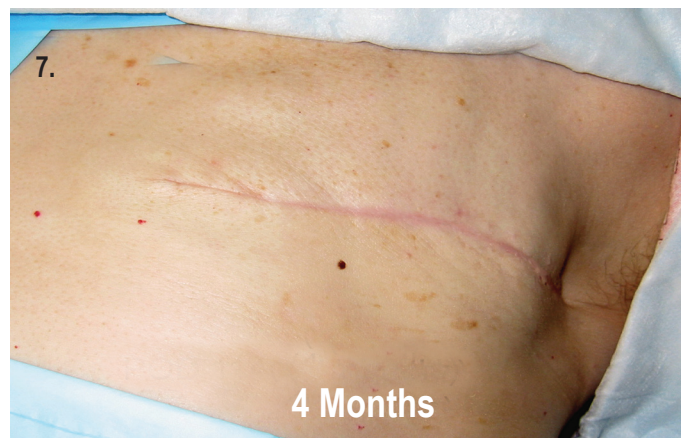
#### CLINICAL OUTCOMES

Figs. 5 & 6 This is a comfortable, low maintenance wound.

Note the sustained eversion and absence of inflammation from the absorbable staples.



Fig. 7 Wounds heal with flat, narrow scars and very pleasing aesthetic results. Patient satisfaction has been excellent.



*This paper was published by Incisive Surgical, Inc.,  
Minneapolis, MN  
© 2008 Incisive Surgical, Inc. All rights reserved.*