

SILIMED



Catalogue 2012 / 2013



EuroSurgical

CONTENTS

About Silimed	2
Silimed Breast Implant Collection	3
Implant Features & Technology	6
The BIODESIGN™ Matrix of Polyurethane Implants <i>by Width</i>	9
The BIODESIGN™ Matrix of Polyurethane Implants <i>by Projection</i>	16
The BIODESIGN™ Matrix of Textured Implants <i>by Width</i>	22
The BIODESIGN™ Matrix of Textured Implants <i>by Projection</i>	28
Breast Reconstruction - Tissue Expanders	33
Silimed Product Replacement Program	35



The BIODESIGN™ collection from Silimed.

A line of mammary implants and tissue expanders helping the physician to plan and develop a customised result for the biotype of the patient.

INFORMATION

All Silimed Breast Implants and Tissue expanders are latex free. This is described in the product information package which comes with all implants.

Every Silimed implant has a brand and size embossed on the implant making it easy to identify at any time. Silimed is the only manufacturer with a serial number on each implant for complete traceability.

This catalogue has been developed especially for the Australasian market to help you choose and learn about our range of breast implants and breast tissue expanders.

- The dimensions and volumes described in the following tables are approximate values.
- The silicone inside our implants may vary in colour from opaque grey to translucent yellow.
- Please read the Instructions for Use (IFU) in the packaging accompanying the product before use.



Silimed has operated in the market since 1978 serving the plastic surgery community with the manufacturing & distribution of products of the highest quality to satisfy a broad range of needs. In order to achieve this we have developed the best possible partnerships in technology development, raw material supplies, regulatory bodies, universities and surgeons.

As a result of this work we are renowned worldwide and operate in over 70 countries, in 5 continents. We comply with all formal requirements of each Ministry of Health in the countries where Silimed has partners. We are ISO-9001-2000 & EN13485:2003 certified, have GMP from ANVISA (Brazil) and GMP from the FDA. Our products bear the CE mark and are listed on the ARTG in Australia and in New Zealand on WAND with the Ministry of Health.

As constant improvement moves us forward we are always looking at growing market demands and investing heavily in the development of state-of-the-art products to meet patients and surgeon's needs.

SILIMED BREAST IMPLANT COLLECTION

- **P-URE Polyurethane gel-filled anatomical and round mammary implants**
- **Textured gel-filled anatomical and round mammary implants**
- **Tissue expanders anatomical and round for the breast**

The BIODESIGN™ Collection of mammary implants represents the sum of our experience with the modern and sophisticated needs of an ever demanding market. The innovation represented by this line is the variety of shapes in the base and profile with four different projections for each model, resulting in the right choice of implant for the patient. BIODESIGN™ is a line of mammary implants which helps the physician to plan and develop a customised result for the biotype of the patient.

In addition to the broad range of shapes and dimensions, our implants all contain the high performance BIODESIGN™ gel that is an integral part of this new line. The range includes a flat, malleable base that adapts to the thoracic wall and maintains the projection described in the catalogue, as well as a more tapered and flexible edge, which is less palpable and visible. Since the base is flat, the implants are filled with more gel (of great elasticity and memory) with the result that there is a reduced tendency to deform after implantation, leaving the breasts perfectly natural.

We provide sterilisable gel sizers for fine tuning during surgery. We recommend that during the operation the physician uses the sizer equivalent to the implant ordered, to confirm or correct his/her original choice.

We have added the D measurement (otherwise known as the Lower Ventral Curvature) to our tables, which measures from the base to the peak projection of the implant. There is a coloured marking spot, to guide the physician to the desired position in relation to the nipple-areola-complex making the choice of implant even easier. The use of this measurement is entirely the physicians choice.

In addition there are markers on the base of the implant to allow for perfect tactile positioning. All the anatomical implants are also marked with a vertical line that runs from the inferior edge to the peak of the implant to ensure proper vertical alignment.

In short, Silimed's intention is to arm you with a larger number of tools, but always respecting your expertise in their use.



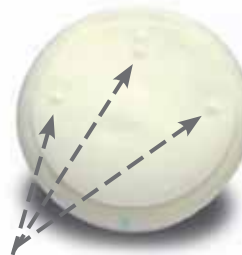
Textured implant & the corresponding sterilisable sizer.



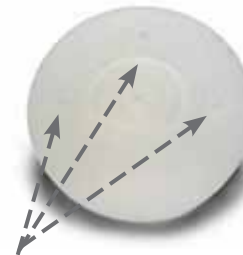
ORIENTATION LINES, MARKERS & SHAPES

POLYURETHANE IMPLANTS

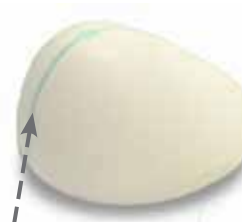
TEXTURED IMPLANTS



Orientation markers



Orientation markers



Vertical positional line

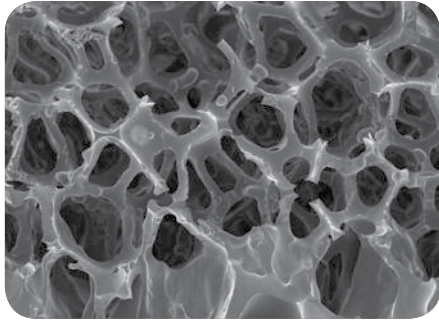


Vertical positional line



IMPLANT FEATURES & TECHNOLOGY

P-URE POLYURETHANE FOAM COATED BREAST IMPLANTS



Magnified image of the Polyurethane surface matrix

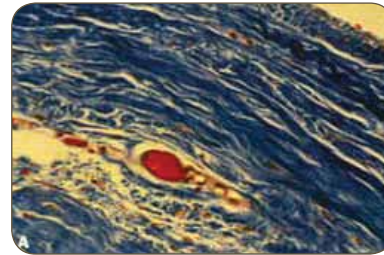
One of the physician's main objectives while planning surgery, be it aesthetic or reconstructive, is to minimize the possibility of capsular contracture, rotation or downward displacement.

With this in mind, the BIODESIGN™ polyurethane foam coated mammary implants provide significant advantages compared to other types of implants. Over the last twenty years, several peer reviewed scientific studies have been published with a large number of patients that point towards very low rates of capsular contracture, which, in some studies, amounts to around only 1-2% after 15 years of implantation.

These low rates with longer term effects are attributed to the micro-encapsulation of the fibroblasts on the polyurethane foam matrix. Due to this active scarring process, instead of a single linear capsule with great contractile ability (as occurs around textured and smooth implants) what is observed is the formation of micro capsules around each polyurethane strut, thus neutralising the contraction vectors. As a consequence, the occurrence of capsular contracture is drastically reduced. Another major benefit of the polyurethane foam is its ability to adhere to the surrounding tissues, reducing the occurrence of displacement or rotation of the implant to a negligible value.

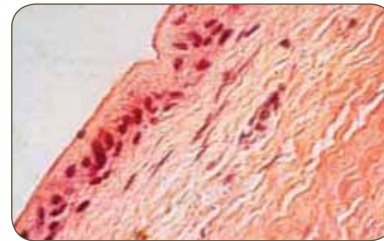
These unique characteristics of the polyurethane foam, combined with the gel of great elasticity and memory, result in breasts which are natural and soft to the touch with the minimum risk of capsular contracture. Confidence in product performance is reflected in our product replacement program.

Smooth Implant Capsule



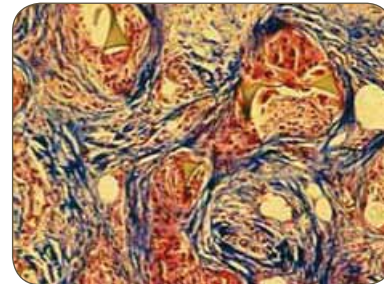
Microscopic view of scar tissue capsule surrounding a smooth breast implant: collagen arrayed in parallel linear fashion.

Textured Implant Capsule



Microscopic view of scar tissue capsule surrounding a mechanically textured breast implant: in spite of surface texturing, collagen is deposited in parallel linear fashion.

Polyurethane Implant Capsule



Microscopic view of scar tissue capsule surrounding a poly-urethane coated breast implant.

Clinical papers reference:

Vazquez and Pellon, 2007 Polyurethane Coated Silicone Gel Breast Implants used for 18 years. Aesth.Plast.Surg. 31.330-336, 2007.

Pitanguy, I : Estagio Atual Dos Implants mamarios. Rev.Braz.CIR 81(6):291-295, 1991

Long-term safety and efficacy of Polyurethane Foam Covered breast implants. Handel - Aesthetic Surgery Journal May - June 2006.

BIODESIGN™ GEL

Silimed gel, with its high-cohesiveness and low bleed properties has been used for many years to meet the specific needs of each part of the human body, varying in their physical characteristics according to the area of use.

Our BIODESIGN™ gel can faithfully reproduce a soft tissue to give the implant a better fit and provide a softer touch moulding to the body whilst improving its appearance. It also helps to preserve its natural look, memory and elasticity properties providing a stable shape with minimal deformation.

The BIODESIGN™ gel consistency or hardness is measured by an instrument (Penetrometer) that calculates the penetration of the gel. A number is assigned for each gels consistency or hardness and corresponds to the depth of penetration of the gel.

BIODESIGN™ gel's high cohesiveness contributes towards less gel transudation. This property is responsible for keeping the molecules connected by not letting the gel "run" if the implant happens to rupture. It denotes elongation and memory, and should not be confused with hardness.



P-URE POLYURETHANE FOAM COATED BREAST IMPLANTS

matrix by width



P-URE POLYURETHANE FOAM COATED BREAST IMPLANTS

BIODESIGN™ - POLYURETHANE

ADVANCE - Round Base, Conical Profile, Medial Pole

30535



MAXIMUM - Round Base, Spherical Profile, Medial Pole

30622



NUANCE - Oval Base, Anatomical Profile, Inferior Pole

30646



NATURAL - Round Base, Tear-Drop Profile, Medial Pole

30637



ENHANCE - Oval Base, Anatomical Profile, Superior Pole

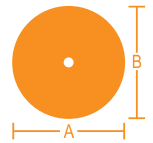
30674



XH - Extra High Projection
MD - Moderate Projection

HI - High Projection
LO - Low Projection

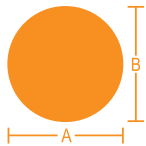
REF	A WIDTH	B HEIGHT	C PROJECTION	D LVC	VOL cm ³
	cm				cm ³
150 XH	8.8	8.8	5.0	7.0	150
140 HI	8.8	8.8	4.5	6.6	140
125 MD	8.8	8.8	4.0	6.2	125
105 LO	8.8	8.8	3.5	5.8	105
180 XH	9.3	9.3	5.3	7.4	180
165 HI	9.3	9.3	4.8	7.0	165
150 MD	9.3	9.3	4.3	6.6	150
135 LO	9.3	9.3	3.8	6.4	135
215 XH	9.8	9.8	5.6	7.8	215
185 HI	9.8	9.8	5.1	7.4	185
175 MD	9.8	9.8	4.6	7.0	175
160 LO	9.8	9.8	4.1	6.7	160
265 XH	10.3	10.3	5.9	8.4	265
235 HI	10.3	10.3	5.4	8.2	235
210 MD	10.3	10.3	4.9	7.5	210
190 LO	10.3	10.3	4.4	7.0	190
300 XH	10.8	10.8	6.2	8.8	300
275 HI	10.8	10.8	5.7	8.5	275
245 MD	10.8	10.8	5.2	8.0	245
225 LO	10.8	10.8	4.7	7.4	225
345 XH	11.3	11.3	6.5	9.2	345
315 HI	11.3	11.3	6.0	8.9	315
300 MD	11.3	11.3	5.5	8.3	300
260 LO	11.3	11.3	5.0	7.8	260
380 XH	11.8	11.8	6.8	9.6	380
355 HI	11.8	11.8	6.3	9.3	355
325 MD	11.8	11.8	5.8	8.6	325
295 LO	11.8	11.8	5.3	8.4	295
435 XH	12.3	12.3	7.1	10.2	435
400 HI	12.3	12.3	6.6	9.6	400
375 MD	12.3	12.3	6.1	9.2	375
350 LO	12.3	12.3	5.6	8.8	350
505 XH	12.8	12.8	7.4	10.6	505
460 HI	12.8	12.8	6.9	10.0	460
435 MD	12.8	12.8	6.4	9.8	435
410 LO	12.8	12.8	5.9	9.3	410
560 XH	13.3	13.3	7.7	10.8	560
520 HI	13.3	13.3	7.2	10.5	520
480 MD	13.3	13.3	6.7	10.1	480
460 LO	13.3	13.3	6.2	9.7	460
655 XH	13.8	13.8	8.0	11.1	655
615 HI	13.8	13.8	7.5	11.0	615
545 MD	13.8	13.8	7.0	10.4	545
510 LO	13.8	13.8	6.5	10.2	510



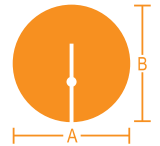
30535 ADVANCE

30622 MAXIMUM

REF	A WIDTH	B HEIGHT	C PROJECTION	D LVC	VOL
cm					cm ³
250 XH	9.6	9.6	5.7	8.1	250
225 HI	9.6	9.6	4.9	7.7	225
190 MD	9.6	9.6	4.1	7.1	190
145 LO	9.6	9.6	3.3	6.4	145
275 XH	9.9	9.9	5.8	8.3	275
240 HI	9.9	9.9	5.0	7.8	240
205 MD	9.9	9.9	4.2	7.2	205
160 LO	9.9	9.9	3.4	6.6	160
300 XH	10.2	10.2	5.9	8.5	300
265 HI	10.2	10.2	5.1	8.0	265
225 MD	10.2	10.2	4.3	7.3	225
175 LO	10.2	10.2	3.5	6.9	175
320 XH	10.5	10.5	6.0	8.7	320
280 HI	10.5	10.5	5.2	8.2	280
240 MD	10.5	10.5	4.4	7.4	240
195 LO	10.5	10.5	3.6	7.1	195
350 XH	10.8	10.8	6.1	9.0	350
305 HI	10.8	10.8	5.3	8.4	305
255 MD	10.8	10.8	4.5	7.5	255
210 LO	10.8	10.8	3.7	7.3	210
375 XH	11.1	11.1	6.2	9.3	375
330 HI	11.1	11.1	5.4	8.6	330
280 MD	11.1	11.1	4.6	7.9	280
235 LO	11.1	11.1	3.8	7.6	235
425 XH	11.7	11.7	6.4	9.6	425
380 HI	11.7	11.7	5.6	9.0	380
335 MD	11.7	11.7	4.8	8.4	335
270 LO	11.7	11.7	4.0	7.9	270
485 XH	12.3	12.3	6.6	9.9	485
435 HI	12.3	12.3	5.8	9.4	435
390 MD	12.3	12.3	5.0	8.8	390
320 LO	12.3	12.3	4.2	8.3	320
565 XH	12.9	12.9	6.8	10.3	565
495 HI	12.9	12.9	6.0	9.8	495
440 MD	12.9	12.9	5.2	9.2	440
360 LO	12.9	12.9	4.4	8.7	360
620 XH	13.5	13.5	7.0	10.7	620
560 HI	13.5	13.5	6.2	10.2	560
505 MD	13.5	13.5	5.4	9.6	505
420 LO	13.5	13.5	4.6	9.1	420
560 MD	14.1	14.1	5.6	10.1	560
475 LO	14.1	14.1	4.8	9.6	475
560 LO	14.7	14.7	5.0	10.1	560
610 LO	15.3	15.3	5.2	10.6	610

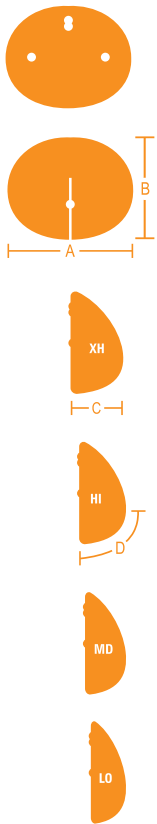


REF	A WIDTH	B HEIGHT	C PROJECTION	D LVC	VOL
cm					cm ³
210 XH	9.6	9.6	5.7	7.3	210
185 HI	9.6	9.6	4.9	6.7	185
155 MD	9.6	9.6	4.1	5.5	155
130 LO	9.6	9.6	3.3	5.1	130
230 XH	9.9	9.9	5.8	7.4	230
200 HI	9.9	9.9	5.0	6.7	200
170 MD	9.9	9.9	4.2	5.7	170
140 LO	9.9	9.9	3.4	5.2	140
245 XH	10.2	10.2	5.9	7.5	245
215 HI	10.2	10.2	5.1	6.8	215
185 MD	10.2	10.2	4.3	5.9	185
155 LO	10.2	10.2	3.5	5.3	155
270 XH	10.5	10.5	6.0	7.7	270
230 HI	10.5	10.5	5.2	6.9	230
200 MD	10.5	10.5	4.4	6.1	200
170 LO	10.5	10.5	3.6	5.5	170
290 XH	10.8	10.8	6.1	7.9	290
250 HI	10.8	10.8	5.3	7.1	250
220 MD	10.8	10.8	4.5	6.3	220
180 LO	10.8	10.8	3.7	5.7	180
315 XH	11.1	11.1	6.2	8.1	315
270 HI	11.1	11.1	5.4	7.3	270
245 MD	11.1	11.1	4.6	6.5	245
195 LO	11.1	11.1	3.8	6.0	195
360 XH	11.7	11.7	6.4	8.3	360
315 HI	11.7	11.7	5.6	7.6	315
275 MD	11.7	11.7	4.8	6.7	275
230 LO	11.7	11.7	4.0	6.3	230
410 XH	12.3	12.3	6.6	8.6	410
360 HI	12.3	12.3	5.8	7.9	360
315 MD	12.3	12.3	5.0	7.0	315
270 LO	12.3	12.3	4.2	6.6	270
470 XH	12.9	12.9	6.8	9.0	470
410 HI	12.9	12.9	6.0	8.2	410
360 MD	12.9	12.9	5.2	7.4	360
310 LO	12.9	12.9	4.4	6.9	310
530 XH	13.5	13.5	7.0	9.3	530
465 HI	13.5	13.5	6.2	8.5	465
410 MD	13.5	13.5	5.4	7.8	410
355 LO	13.5	13.5	4.6	7.2	355
590 XH	14.1	14.1	7.2	9.6	590
525 HI	14.1	14.1	6.4	8.8	525
465 MD	14.1	14.1	5.6	8.2	465
400 LO	14.1	14.1	4.8	7.5	400
590 HI	14.7	14.7	6.6	9.1	590
455 LO	14.7	14.7	5.0	7.8	455
515 LO	15.3	15.3	5.2	8.1	515
580 LO	15.9	15.9	5.4	8.4	580



30637 NATURAL

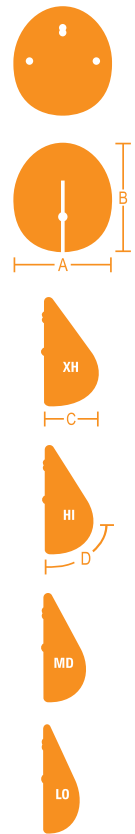
30646 NUANCE



REF	A WIDTH	B HEIGHT	C PROJECTION	D LVC	VOL
	cm				cm ³
205 XH	10.4	8.6	4.7	6.4	205
180 HI	10.4	8.6	4.2	5.9	180
235 XH	10.9	9.0	4.9	6.6	235
210 HI	10.9	9.0	4.4	6.1	210
265 XH	11.4	9.4	5.1	6.8	265
235 HI	11.4	9.4	4.6	6.3	235
305 XH	11.9	9.9	5.3	7.0	305
270 HI	11.9	9.9	4.8	6.6	270
250 MD	11.9	9.9	4.3	6.3	250
220 LO	11.9	9.9	3.8	5.8	220
350 XH	12.4	10.3	5.5	7.2	350
310 HI	12.4	10.3	5.0	6.9	310
285 MD	12.4	10.3	4.5	6.5	285
255 LO	12.4	10.3	4.0	6.1	255
390 XH	12.9	10.7	5.7	7.5	390
345 HI	12.9	10.7	5.2	7.2	345
320 MD	12.9	10.7	4.7	6.8	320
285 LO	12.9	10.7	4.2	6.3	285
435 XH	13.4	11.1	5.9	7.8	435
395 HI	13.4	11.1	5.4	7.5	395
360 MD	13.4	11.1	4.9	7.0	360
325 LO	13.4	11.1	4.4	6.6	325
485 XH	13.9	11.5	6.1	8.1	485
440 HI	13.9	11.5	5.6	7.8	440
405 MD	13.9	11.5	5.1	7.3	405
365 LO	13.9	11.5	4.6	6.8	365
540 XH	14.4	11.9	6.3	8.4	540
490 HI	14.4	11.9	5.8	8.1	490
450 MD	14.4	11.9	5.3	7.5	450
410 LO	14.4	11.9	4.8	7.1	410
595 XH	14.9	12.3	6.5	8.7	595
535 HI	14.9	12.3	6.0	8.4	535
500 MD	14.9	12.3	5.5	7.8	500
455 LO	14.9	12.3	5.0	7.3	455
555 MD	15.4	12.7	5.7	8.2	555
505 LO	15.4	12.7	5.2	7.6	505

30674 ENHANCE

REF	A WIDTH	B HEIGHT	C PROJECTION	D LVC	VOL
	cm				cm ³
220 XH	9.4	10.4	5.1	6.6	220
190 HI	9.4	10.4	4.3	6.1	190
250 XH	9.9	10.9	5.3	6.9	250
220 HI	9.9	10.9	4.5	6.3	220
180 MD	9.9	10.9	3.7	5.8	180
290 XH	10.4	11.4	5.5	7.3	290
250 HI	10.4	11.4	4.7	6.6	250
210 MD	10.4	11.4	3.9	6.0	210
335 XH	10.9	11.9	5.7	7.6	335
285 HI	10.9	11.9	4.9	6.9	285
240 MD	10.9	11.9	4.1	6.2	240
375 XH	11.4	12.4	5.9	7.9	375
325 HI	11.4	12.4	5.1	7.2	325
275 MD	11.4	12.4	4.3	6.4	275
230 LO	11.4	12.4	3.5	6.0	230
420 XH	11.9	12.9	6.1	8.3	420
365 HI	11.9	12.9	5.3	7.5	365
315 MD	11.9	12.9	4.5	6.7	315
260 LO	11.9	12.9	3.7	6.2	260
470 XH	12.4	13.4	6.3	8.7	470
410 HI	12.4	13.4	5.5	7.8	410
355 MD	12.4	13.4	4.7	7.0	355
300 LO	12.4	13.4	3.9	6.5	300
465 HI	12.9	13.9	5.7	8.1	465
405 MD	12.9	13.9	4.9	7.3	405
345 LO	12.9	13.9	4.1	6.8	345
515 HI	13.4	14.4	5.9	8.4	515
450 MD	13.4	14.4	5.1	7.7	450
385 LO	13.4	14.4	4.3	7.1	385
580 HI	13.9	14.9	6.1	8.8	580
500 MD	13.9	14.9	5.3	8.1	500
425 LO	13.9	14.9	4.5	7.4	425
560 MD	14.4	15.4	5.5	8.5	560
480 LO	14.4	15.4	4.7	7.7	480
620 MD	14.9	15.9	5.7	8.9	620
535 LO	14.9	15.9	4.9	8.1	535

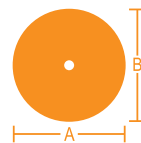


P-URE POLYURETHANE FOAM COATED BREAST IMPLANTS

matrix by projection

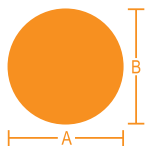


REF	A WIDTH	B HEIGHT	C PROJECTION	D LVC	VOL
	cm				cm ³
105 LO	8.8	8.8	3.5	5.8	105
135 LO	9.3	9.3	3.8	6.4	135
160 LO	9.8	9.8	4.1	6.7	160
190 LO	10.3	10.3	4.4	7.0	190
225 LO	10.8	10.8	4.7	7.4	225
260 LO	11.3	11.3	5.0	7.8	260
295 LO	11.8	11.8	5.3	8.4	295
350 LO	12.3	12.3	5.6	8.8	350
410 LO	12.8	12.8	5.9	9.3	410
460 LO	13.3	13.3	6.2	9.7	460
510 LO	13.8	13.8	6.5	10.2	510
125 MD	8.8	8.8	4.0	6.2	125
150 MD	9.3	9.3	4.3	6.6	150
175 MD	9.8	9.8	4.6	7.0	175
210 MD	10.3	10.3	4.9	7.5	210
245 MD	10.8	10.8	5.2	8.0	245
300 MD	11.3	11.3	5.5	8.3	300
325 MD	11.8	11.8	5.8	8.6	325
375 MD	12.3	12.3	6.1	9.2	375
435 MD	12.8	12.8	6.4	9.8	435
480 MD	13.3	13.3	6.7	10.1	480
545 MD	13.8	13.8	7.0	10.4	545
140 HI	8.8	8.8	4.5	6.6	140
165 HI	9.3	9.3	4.8	7.0	165
185 HI	9.8	9.8	5.1	7.4	185
235 HI	10.3	10.3	5.4	8.2	235
275 HI	10.8	10.8	5.7	8.5	275
315 HI	11.3	11.3	6.0	8.9	315
355 HI	11.8	11.8	6.3	9.3	355
400 HI	12.3	12.3	6.6	9.6	400
460 HI	12.8	12.8	6.9	10.0	460
520 HI	13.3	13.3	7.2	10.5	520
615 HI	13.8	13.8	7.5	11.0	615
150 XH	8.8	8.8	5.0	7.0	150
180 XH	9.3	9.3	5.3	7.4	180
215 XH	9.8	9.8	5.6	7.8	215
265 XH	10.3	10.3	5.9	8.4	265
300 XH	10.8	10.8	6.2	8.8	300
345 XH	11.3	11.3	6.5	9.2	345
380 XH	11.8	11.8	6.8	9.6	380
435 XH	12.3	12.3	7.1	10.2	435
505 XH	12.8	12.8	7.4	10.6	505
560 XH	13.3	13.3	7.7	10.8	560
655 XH	13.8	13.8	8.0	11.1	655



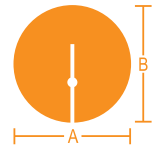
30535 ADVANCE

30622 MAXIMUM



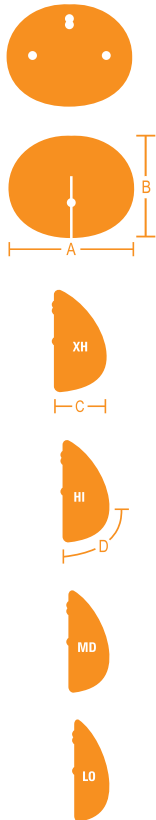
REF	A WIDTH	B HEIGHT	C PROJECTION	D LVC	VOL
	cm				cm ³
145 LO	9.6	9.6	3.3	6.4	145
160 LO	9.9	9.9	3.4	6.6	160
175 LO	10.2	10.2	3.5	6.9	175
195 LO	10.5	10.5	3.6	7.1	195
210 LO	10.8	10.8	3.7	7.3	210
235 LO	11.1	11.1	3.8	7.6	235
270 LO	11.7	11.7	4.0	7.9	270
320 LO	12.3	12.3	4.2	8.3	320
360 LO	12.9	12.9	4.4	8.7	360
420 LO	13.5	13.5	4.6	9.1	420
475 LO	14.1	14.1	4.8	9.6	475
560 LO	14.7	14.7	5.0	10.1	560
610 LO	15.3	15.3	5.2	10.6	610
190 MD	9.6	9.6	4.1	7.1	190
205 MD	9.9	9.9	4.2	7.2	205
225 MD	10.2	10.2	4.3	7.3	225
240 MD	10.5	10.5	4.4	7.4	240
255 MD	10.8	10.8	4.5	7.5	255
280 MD	11.1	11.1	4.6	7.9	280
335 MD	11.7	11.7	4.8	8.4	335
390 MD	12.3	12.3	5.0	8.8	390
440 MD	12.9	12.9	5.2	9.2	440
505 MD	13.5	13.5	5.4	9.6	505
560 MD	14.1	14.1	5.6	10.1	560
225 HI	9.6	9.6	4.9	7.7	225
240 HI	9.9	9.9	5.0	7.8	240
265 HI	10.2	10.2	5.1	8.0	265
280 HI	10.5	10.5	5.2	8.2	280
305 HI	10.8	10.8	5.3	8.4	305
330 HI	11.1	11.1	5.4	8.6	330
380 HI	11.7	11.7	5.6	9.0	380
435 HI	12.3	12.3	5.8	9.4	435
495 HI	12.9	12.9	6.0	9.8	495
560 HI	13.5	13.5	6.2	10.2	560
250 XH	9.6	9.6	5.7	8.1	250
275 XH	9.9	9.9	5.8	8.3	275
300 XH	10.2	10.2	5.9	8.5	300
320 XH	10.5	10.5	6.0	8.7	320
350 XH	10.8	10.8	6.1	9.0	350
375 XH	11.1	11.1	6.2	9.3	375
425 XH	11.7	11.7	6.4	9.6	425
485 XH	12.3	12.3	6.6	9.9	485
565 XH	12.9	12.9	6.8	10.3	565
620 XH	13.5	13.5	7.0	10.7	620

30637 NATURAL



REF	A WIDTH	B HEIGHT	C PROJECTION	D LVC	VOL
	cm				cm ³
130 LO	9.6	9.6	3.3	5.1	130
140 LO	9.9	9.9	3.4	5.2	140
155 LO	10.2	10.2	3.5	5.3	155
170 LO	10.5	10.5	3.6	5.5	170
180 LO	10.8	10.8	3.7	5.7	180
195 LO	11.1	11.1	3.8	6.0	195
230 LO	11.7	11.7	4.0	6.3	230
270 LO	12.3	12.3	4.2	6.6	270
310 LO	12.9	12.9	4.4	6.9	310
355 LO	13.5	13.5	4.6	7.2	355
400 LO	14.1	14.1	4.8	7.5	400
455 LO	14.7	14.7	5.0	7.8	455
515 LO	15.3	15.3	5.2	8.1	515
580 LO	15.9	15.9	5.4	8.4	580
155 MD	9.6	9.6	4.1	5.5	155
170 MD	9.9	9.9	4.2	5.7	170
185 MD	10.2	10.2	4.3	5.9	185
200 MD	10.5	10.5	4.4	6.1	200
220 MD	10.8	10.8	4.5	6.3	220
245 MD	11.1	11.1	4.6	6.5	245
275 MD	11.7	11.7	4.8	6.7	275
315 MD	12.3	12.3	5.0	7.0	315
360 MD	12.9	12.9	5.2	7.4	360
410 MD	13.5	13.5	5.4	7.8	410
465 MD	14.1	14.1	5.6	8.2	465
185 HI	9.6	9.6	4.9	6.7	185
200 HI	9.9	9.9	5.0	6.7	200
215 HI	10.2	10.2	5.1	6.8	215
230 HI	10.5	10.5	5.2	6.9	230
250 HI	10.8	10.8	5.3	7.1	250
270 HI	11.1	11.1	5.4	7.3	270
315 HI	11.7	11.7	5.6	7.6	315
360 HI	12.3	12.3	5.8	7.9	360
410 HI	12.9	12.9	6.0	8.2	410
465 HI	13.5	13.5	6.2	8.5	465
525 HI	14.1	14.1	6.4	8.8	525
590 HI	14.7	14.7	6.6	9.1	590
210 XH	9.6	9.6	5.7	7.3	210
230 XH	9.9	9.9	5.8	7.4	230
245 XH	10.2	10.2	5.9	7.5	245
270 XH	10.5	10.5	6.0	7.7	270
290 XH	10.8	10.8	6.1	7.9	290
315 XH	11.1	11.1	6.2	8.1	315
360 XH	11.7	11.7	6.4	8.3	360
410 XH	12.3	12.3	6.6	8.6	410
470 XH	12.9	12.9	6.8	9.0	470
530 XH	13.5	13.5	7.0	9.3	530
590 XH	14.1	14.1	7.2	9.6	590

30646 NUANCE



REF	A WIDTH	B HEIGHT	C PROJECTION	D LVC	VOL
	cm				cm ³
220 LO	11.9	9.9	3.8	5.8	220
255 LO	12.4	10.3	4.0	6.1	255
285 LO	12.9	10.7	4.2	6.3	285
325 LO	13.4	11.1	4.4	6.6	325
365 LO	13.9	11.5	4.6	6.8	365
410 LO	14.4	11.9	4.8	7.1	410
455 LO	14.9	12.3	5.0	7.3	455
505 LO	15.4	12.7	5.2	7.6	505
250 MD	11.9	9.9	4.3	6.3	250
285 MD	12.4	10.3	4.5	6.5	285
320 MD	12.9	10.7	4.7	6.8	320
360 MD	13.4	11.1	4.9	7.0	360
405 MD	13.9	11.5	5.1	7.3	405
450 MD	14.4	11.9	5.3	7.5	450
500 MD	14.9	12.3	5.5	7.8	500
555 MD	15.4	12.7	5.7	8.2	555
180 HI	10.4	8.6	4.2	5.9	180
210 HI	10.9	9.0	4.4	6.1	210
235 HI	11.4	9.4	4.6	6.3	235
270 HI	11.9	9.9	4.8	6.6	270
310 HI	12.4	10.3	5.0	6.9	310
345 HI	12.9	10.7	5.2	7.2	345
395 HI	13.4	11.1	5.4	7.5	395
440 HI	13.9	11.5	5.6	7.8	440
490 HI	14.4	11.9	5.8	8.1	490
535 HI	14.9	12.3	6.0	8.4	535
205 XH	10.4	8.6	4.7	6.4	205
235 XH	10.9	9.0	4.9	6.6	235
265 XH	11.4	9.4	5.1	6.8	265
305 XH	11.9	9.9	5.3	7.0	305
350 XH	12.4	10.3	5.5	7.2	350
390 XH	12.9	10.7	5.7	7.5	390
435 XH	13.4	11.1	5.9	7.8	435
485 XH	13.9	11.5	6.1	8.1	485
540 XH	14.4	11.9	6.3	8.4	540
595 XH	14.9	12.3	6.5	8.7	595

30674 ENHANCE



REF	A WIDTH	B HEIGHT	C PROJECTION	D LVC	VOL
	cm				cm ³
230 LO	11.4	12.4	3.5	6.0	230
260 LO	11.9	12.9	3.7	6.2	260
300 LO	12.4	13.4	3.9	6.5	300
345 LO	12.9	13.9	4.1	6.8	345
385 LO	13.4	14.4	4.3	7.1	385
425 LO	13.9	14.9	4.5	7.4	425
480 LO	14.4	15.4	4.7	7.7	480
535 LO	14.9	15.9	4.9	8.1	535
180 MD	9.9	10.9	3.7	5.8	180
210 MD	10.4	11.4	3.9	6.0	210
240 MD	10.9	11.9	4.1	6.2	240
275 MD	11.4	12.4	4.3	6.4	275
315 MD	11.9	12.9	4.5	6.7	315
355 MD	12.4	13.4	4.7	7.0	355
405 MD	12.9	13.9	4.9	7.3	405
450 MD	13.4	14.4	5.1	7.7	450
500 MD	13.9	14.9	5.3	8.1	500
560 MD	14.4	15.4	5.5	8.5	560
620 MD	14.9	15.9	5.7	8.9	620
190 HI	9.4	10.4	4.3	6.1	190
220 HI	9.9	10.9	4.5	6.3	220
250 HI	10.4	11.4	4.7	6.6	250
285 HI	10.9	11.9	4.9	6.9	285
325 HI	11.4	12.4	5.1	7.2	325
365 HI	11.9	12.9	5.3	7.5	365
410 HI	12.4	13.4	5.5	7.8	410
465 HI	12.9	13.9	5.7	8.1	465
515 HI	13.4	14.4	5.9	8.4	515
580 HI	13.9	14.9	6.1	8.8	580
220 XH	9.4	10.4	5.1	6.6	220
250 XH	9.9	10.9	5.3	6.9	250
290 XH	10.4	11.4	5.5	7.3	290
335 XH	10.9	11.9	5.7	7.6	335
375 XH	11.4	12.4	5.9	7.9	375
420 XH	11.9	12.9	6.1	8.3	420
470 XH	12.4	13.4	6.3	8.7	470

TEXTURED BREAST IMPLANTS

matrix by width



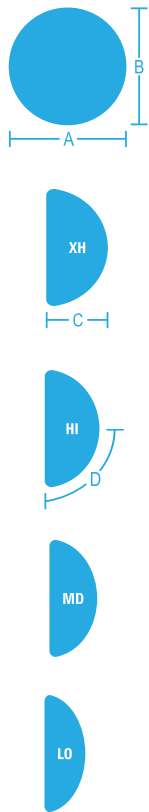
TEXTURED BREAST IMPLANTS

BIODESIGN™ - TEXTURED				
MAXIMUM 20622	Round Base, Spherical Profile, Medial Pole			
NUANCE 20646	Oval Base, Anatomical Profile, Inferior Pole			
NATURAL 20637	Round Base, Tear Drop Profile, Medial Pole			
ENHANCE 20674	Oval Base, Anatomical Profile, Superior Pole			

XH - Extra High Projection
MD - Moderate Projection

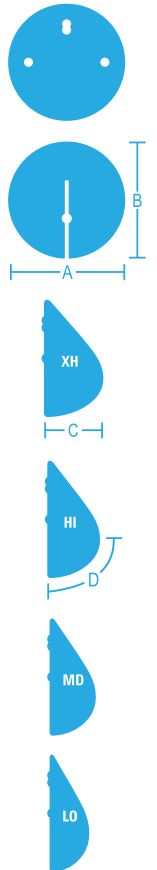
HI - High Projection
LO - Low Projection

20622 MAXIMUM



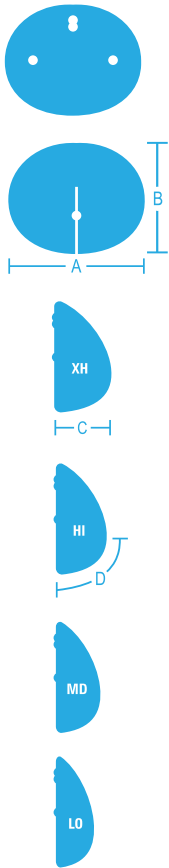
REF	A WIDTH	B HEIGHT	C PROJECTION	D LVC	VOL
	cm				cm ³
255 XH	9.2	9.2	5.6	7.8	255
225 HI	9.2	9.2	4.8	7.2	225
190 MD	9.2	9.2	4.0	6.7	190
155 LO	9.2	9.2	3.2	6.2	155
280 XH	9.5	9.5	5.7	8.0	280
245 HI	9.5	9.5	4.9	7.3	245
205 MD	9.5	9.5	4.1	6.8	205
170 LO	9.5	9.5	3.3	6.4	170
305 XH	9.8	9.8	5.8	8.4	305
270 HI	9.8	9.8	5.0	7.6	270
225 MD	9.8	9.8	4.2	7.0	225
185 LO	9.8	9.8	3.4	6.6	185
325 XH	10.1	10.1	5.9	8.6	325
285 HI	10.1	10.1	5.1	7.8	285
240 MD	10.1	10.1	4.3	7.2	240
200 LO	10.1	10.1	3.5	6.8	200
360 XH	10.4	10.4	6.0	8.8	360
305 HI	10.4	10.4	5.2	8.1	305
255 MD	10.4	10.4	4.4	7.4	255
215 LO	10.4	10.4	3.6	7.0	215
380 XH	10.7	10.7	6.1	9.0	380
335 HI	10.7	10.7	5.3	8.3	335
280 MD	10.7	10.7	4.5	7.6	280
240 LO	10.7	10.7	3.7	7.2	240
430 XH	11.3	11.3	6.3	9.2	430
390 HI	11.3	11.3	5.5	8.6	390
330 MD	11.3	11.3	4.7	8.0	330
275 LO	11.3	11.3	3.9	7.5	275
500 XH	11.9	11.9	6.5	9.6	500
445 HI	11.9	11.9	5.7	9.0	445
385 MD	11.9	11.9	4.9	8.4	385
335 LO	11.9	11.9	4.1	8.0	335
570 XH	12.5	12.5	6.7	10.0	570
505 HI	12.5	12.5	5.9	9.4	505
440 MD	12.5	12.5	5.1	8.9	440
360 LO	12.5	12.5	4.3	8.3	360
625 XH	13.1	13.1	6.9	10.4	625
570 HI	13.1	13.1	6.1	9.8	570
505 MD	13.1	13.1	5.3	9.4	505
430 LO	13.1	13.1	4.5	8.7	430
565 MD	13.7	13.7	5.5	9.7	565
475 LO	13.7	13.7	4.7	9.1	475
570 LO	14.3	14.3	4.9	9.8	570
615 LO	14.9	14.9	5.1	10.0	615

REF	A WIDTH	B HEIGHT	C PROJECTION	D LVC	VOL
	cm				cm ³
210 XH	9.2	9.2	5.6	6.9	210
185 HI	9.2	9.2	4.8	6.3	185
160 MD	9.2	9.2	4.0	5.7	160
135 LO	9.2	9.2	3.2	5.1	135
230 XH	9.5	9.5	5.7	7.1	230
200 HI	9.5	9.5	4.9	6.4	200
170 MD	9.5	9.5	4.1	5.8	170
145 LO	9.5	9.5	3.3	5.2	145
250 XH	9.8	9.8	5.8	7.3	250
220 HI	9.8	9.8	5.0	6.6	220
190 MD	9.8	9.8	4.2	6.0	190
155 LO	9.8	9.8	3.4	5.3	155
270 XH	10.1	10.1	5.9	7.5	270
235 HI	10.1	10.1	5.1	6.8	235
205 MD	10.1	10.1	4.3	6.2	205
170 LO	10.1	10.1	3.5	5.5	170
290 XH	10.4	10.4	6.0	7.7	290
255 HI	10.4	10.4	5.2	7.0	255
220 MD	10.4	10.4	4.4	6.4	220
185 LO	10.4	10.4	3.6	5.7	185
320 XH	10.7	10.7	6.1	7.9	320
270 HI	10.7	10.7	5.3	7.2	270
245 MD	10.7	10.7	4.5	6.6	245
200 LO	10.7	10.7	3.7	6.0	200
365 XH	11.3	11.3	6.3	8.2	365
320 HI	11.3	11.3	5.5	7.5	320
275 MD	11.3	11.3	4.7	6.8	275
230 LO	11.3	11.3	3.9	6.3	230
425 XH	11.9	11.9	6.5	8.5	425
370 HI	11.9	11.9	5.7	7.8	370
320 MD	11.9	11.9	4.9	7.1	320
275 LO	11.9	11.9	4.1	6.6	275
475 XH	12.5	12.5	6.7	8.8	475
425 HI	12.5	12.5	5.9	8.1	425
360 MD	12.5	12.5	5.1	7.4	360
315 LO	12.5	12.5	4.3	6.9	315
550 XH	13.1	13.1	6.9	9.1	550
485 HI	13.1	13.1	6.1	8.4	485
415 MD	13.1	13.1	5.3	7.7	415
360 LO	13.1	13.1	4.5	7.2	360
610 XH	13.7	13.7	7.1	9.4	610
550 HI	13.7	13.7	6.3	8.8	550
470 MD	13.7	13.7	5.5	8.0	470
410 LO	13.7	13.7	4.7	7.5	410



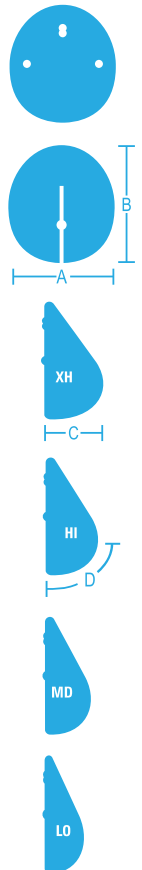
20637 NATURAL

20646 NUANCE



REF	A WIDTH	B HEIGHT	C PROJECTION	D LVC	VOL
	cm				cm ³
220 XH	10.0	8.2	4.6	6.0	220
185 HI	10.0	8.2	4.1	5.7	185
240 XH	10.5	8.6	4.8	6.3	240
210 HI	10.5	8.6	4.3	6.0	210
280 XH	11.0	9.0	5.0	6.6	280
245 HI	11.0	9.0	4.5	6.3	245
325 XH	11.5	9.5	5.2	6.9	325
285 HI	11.5	9.5	4.7	6.6	285
250 MD	11.5	9.5	4.2	5.8	250
220 LO	11.5	9.5	3.7	5.3	220
350 XH	12.0	9.9	5.4	7.1	350
315 HI	12.0	9.9	4.9	6.9	315
280 MD	12.0	9.9	4.4	6.1	280
250 LO	12.0	9.9	3.9	5.6	250
405 XH	12.5	10.3	5.6	7.4	405
355 HI	12.5	10.3	5.1	7.2	355
320 MD	12.5	10.3	4.6	6.4	320
285 LO	12.5	10.3	4.1	5.9	285
440 XH	13.0	10.7	5.8	7.7	440
395 HI	13.0	10.7	5.3	7.5	395
360 MD	13.0	10.7	4.8	6.7	360
320 LO	13.0	10.7	4.3	6.2	320
485 XH	13.5	11.1	6.0	8.0	485
450 HI	13.5	11.1	5.5	7.8	450
400 MD	13.5	11.1	5.0	7.0	400
365 LO	13.5	11.1	4.5	6.5	365
500 HI	14.0	11.5	5.7	8.1	500
450 MD	14.0	11.5	5.2	7.3	450
405 LO	14.0	11.5	4.7	6.8	405
545 HI	14.5	11.9	5.9	8.4	545
500 MD	14.5	11.9	5.4	7.6	500
455 LO	14.5	11.9	4.9	7.1	455
555 MD	15.0	12.3	5.6	7.9	555
505 LO	15.0	12.3	5.1	7.4	505

REF	A WIDTH	B HEIGHT	C PROJECTION	D LVC	VOL
	cm				cm ³
215 XH	9.0	10.0	5.0	6.5	215
190 HI	9.0	10.0	4.2	6.0	190
250 XH	9.5	10.5	5.2	6.8	250
215 HI	9.5	10.5	4.4	6.2	215
180 MD	9.5	10.5	3.6	5.4	180
290 XH	10.0	11.0	5.4	7.1	290
250 HI	10.0	11.0	4.6	6.4	250
210 MD	10.0	11.0	3.8	5.6	210
330 XH	10.5	11.5	5.6	7.4	330
285 HI	10.5	11.5	4.8	6.6	285
240 MD	10.5	11.5	4.0	5.8	240
375 XH	11.0	12.0	5.8	7.7	375
320 HI	11.0	12.0	5.0	6.9	320
275 MD	11.0	12.0	4.2	6.1	275
225 LO	11.0	12.0	3.4	5.6	225
420 XH	11.5	12.5	6.0	8.0	420
365 HI	11.5	12.5	5.2	7.2	365
310 MD	11.5	12.5	4.4	6.4	310
260 LO	11.5	12.5	3.6	5.8	260
465 XH	12.0	13.0	6.2	8.3	465
410 HI	12.0	13.0	5.4	7.5	410
350 MD	12.0	13.0	4.6	6.7	350
295 LO	12.0	13.0	3.8	6.1	295
520 XH	12.5	13.5	6.4	8.6	520
460 HI	12.5	13.5	5.6	7.8	460
400 MD	12.5	13.5	4.8	7.0	400
340 LO	12.5	13.5	4.0	6.4	340
510 HI	13.0	14.0	5.8	8.1	510
450 MD	13.0	14.0	5.0	7.3	450
380 LO	13.0	14.0	4.2	6.7	380
570 HI	13.5	14.5	6.0	8.4	570
500 MD	13.5	14.5	5.2	7.6	500
425 LO	13.5	14.5	4.4	7.0	425
635 HI	14.0	15.0	6.2	8.7	635
560 MD	14.0	15.0	5.4	8.0	560
475 LO	14.0	15.0	4.6	7.3	475
615 MD	14.5	15.5	5.6	8.4	615
530 LO	14.5	15.5	4.8	7.6	530



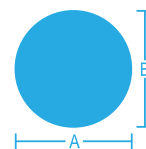
20674 ENHANCE

TEXTURED BREAST IMPLANTS

matrix by projection

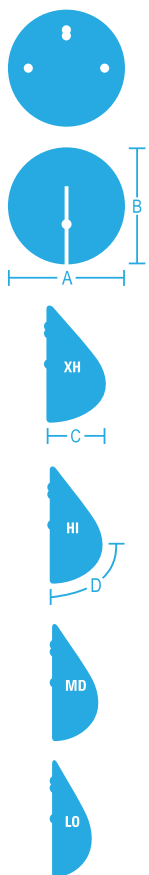


REF	A WIDTH	B HEIGHT	C PROJECTION	D LVC	VOL cm ³
	cm				cm ³
155 LO	9.2	9.2	3.2	6.2	155
170 LO	9.5	9.5	3.3	6.4	170
185 LO	9.8	9.8	3.4	6.6	185
200 LO	10.1	10.1	3.5	6.8	200
215 LO	10.4	10.4	3.6	7.0	215
240 LO	10.7	10.7	3.7	7.2	240
275 LO	11.3	11.3	3.9	7.5	275
335 LO	11.9	11.9	4.1	8.0	335
360 LO	12.5	12.5	4.3	8.3	360
430 LO	13.1	13.1	4.5	8.7	430
475 LO	13.7	13.7	4.7	9.1	475
570 LO	14.3	14.3	4.9	9.8	570
615 LO	14.9	14.9	5.1	10.0	615
190 MD	9.2	9.2	4.0	6.7	190
205 MD	9.5	9.5	4.1	6.8	205
225 MD	9.8	9.8	4.2	7.0	225
240 MD	10.1	10.1	4.3	7.2	240
255 MD	10.4	10.4	4.4	7.4	255
280 MD	10.7	10.7	4.5	7.6	280
330 MD	11.3	11.3	4.7	8.0	330
385 MD	11.9	11.9	4.9	8.4	385
440 MD	12.5	12.5	5.1	8.9	440
505 MD	13.1	13.1	5.3	9.4	505
565 MD	13.7	13.7	5.5	9.7	565
225 HI	9.2	9.2	4.8	7.2	225
245 HI	9.5	9.5	4.9	7.3	245
270 HI	9.8	9.8	5.0	7.6	270
285 HI	10.1	10.1	5.1	7.8	285
305 HI	10.4	10.4	5.2	8.1	305
335 HI	10.7	10.7	5.3	8.3	335
390 HI	11.3	11.3	5.5	8.6	390
445 HI	11.9	11.9	5.7	9.0	445
505 HI	12.5	12.5	5.9	9.4	505
570 HI	13.1	13.1	6.1	9.8	570
255 XH	9.2	9.2	5.6	7.8	255
280 XH	9.5	9.5	5.7	8.0	280
305 XH	9.8	9.8	5.8	8.4	305
325 XH	10.1	10.1	5.9	8.6	325
360 XH	10.4	10.4	6.0	8.8	360
380 XH	10.7	10.7	6.1	9.0	380
430 XH	11.3	11.3	6.3	9.2	430
500 XH	11.9	11.9	6.5	9.6	500
570 XH	12.5	12.5	6.7	10.0	570
625 XH	13.1	13.1	6.9	10.4	625



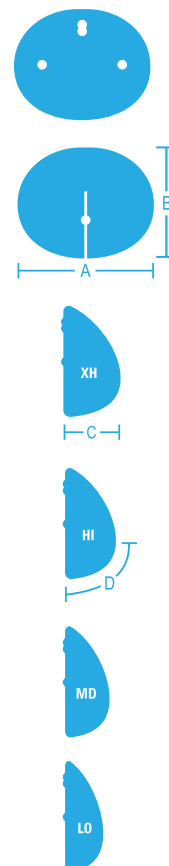
20622 MAXIMUM

20637 NATURAL



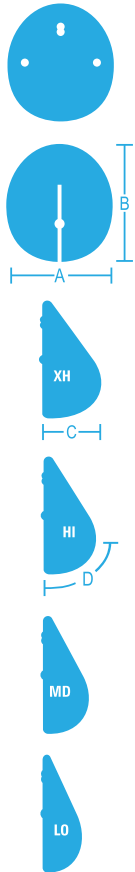
REF	A WIDTH	B HEIGHT	C PROJECTION	D LVC	VOL
cm					cm ³
135 LO	9.2	9.2	3.2	5.1	135
145 LO	9.5	9.5	3.3	5.2	145
155 LO	9.8	9.8	3.4	5.3	155
170 LO	10.1	10.1	3.5	5.5	170
185 LO	10.4	10.4	3.6	5.7	185
200 LO	10.7	10.7	3.7	6.0	200
230 LO	11.3	11.3	3.9	6.3	230
275 LO	11.9	11.9	4.1	6.6	275
315 LO	12.5	12.5	4.3	6.9	315
360 LO	13.1	13.1	4.5	7.2	360
410 LO	13.7	13.7	4.7	7.5	410
160 MD	9.2	9.2	4.0	5.7	160
170 MD	9.5	9.5	4.1	5.8	170
190 MD	9.8	9.8	4.2	6.0	190
205 MD	10.1	10.1	4.3	6.2	205
220 MD	10.4	10.4	4.4	6.4	220
245 MD	10.7	10.7	4.5	6.6	245
275 MD	11.3	11.3	4.7	6.8	275
320 MD	11.9	11.9	4.9	7.1	320
360 MD	12.5	12.5	5.1	7.4	360
415 MD	13.1	13.1	5.3	7.7	415
470 MD	13.7	13.7	5.5	8.0	470
185 HI	9.2	9.2	4.8	6.3	185
200 HI	9.5	9.5	4.9	6.4	200
220 HI	9.8	9.8	5.0	6.6	220
235 HI	10.1	10.1	5.1	6.8	235
255 HI	10.4	10.4	5.2	7.0	255
270 HI	10.7	10.7	5.3	7.2	270
320 HI	11.3	11.3	5.5	7.5	320
370 HI	11.9	11.9	5.7	7.8	370
425 HI	12.5	12.5	5.9	8.1	425
485 HI	13.1	13.1	6.1	8.4	485
550 HI	13.7	13.7	6.3	8.8	550
210 XH	9.2	9.2	5.6	6.9	210
230 XH	9.5	9.5	5.7	7.1	230
250 XH	9.8	9.8	5.8	7.3	250
270 XH	10.1	10.1	5.9	7.5	270
290 XH	10.4	10.4	6.0	7.7	290
320 XH	10.7	10.7	6.1	7.9	320
365 XH	11.3	11.3	6.3	8.2	365
425 XH	11.9	11.9	6.5	8.5	425
475 XH	12.5	12.5	6.7	8.8	475
550 XH	13.1	13.1	6.9	9.1	550
610 XH	13.7	13.7	7.1	9.4	610

REF	A WIDTH	B HEIGHT	C PROJECTION	D LVC	VOL
cm					cm ³
220 LO	11.5	9.5	3.7	5.3	220
250 LO	12.0	9.9	3.9	5.6	250
285 LO	12.5	10.3	4.1	5.9	285
320 LO	13.0	10.7	4.3	6.2	320
365 LO	13.5	11.1	4.5	6.5	365
405 LO	14.0	11.5	4.7	6.8	405
455 LO	14.5	11.9	4.9	7.1	455
505 LO	15.0	12.3	5.1	7.4	505
250 MD	11.5	9.5	4.2	5.8	250
280 MD	12.0	9.9	4.4	6.1	280
320 MD	12.5	10.3	4.6	6.4	320
360 MD	13.0	10.7	4.8	6.7	360
400 MD	13.5	11.1	5.0	7.0	400
450 MD	14.0	11.5	5.2	7.3	450
500 MD	14.5	11.9	5.4	7.6	500
555 MD	15.0	12.3	5.6	7.9	555
185 HI	10.0	8.2	4.1	5.7	185
210 HI	10.5	8.6	4.3	6.0	210
245 HI	11.0	9.0	4.5	6.3	245
285 HI	11.5	9.5	4.7	6.6	285
315 HI	12.0	9.9	4.9	6.9	315
355 HI	12.5	10.3	5.1	7.2	355
395 HI	13.0	10.7	5.3	7.5	395
450 HI	13.5	11.1	5.5	7.8	450
500 HI	14.0	11.5	5.7	8.1	500
545 HI	14.5	11.9	5.9	8.4	545
220 XH	10.0	8.2	4.6	6.0	220
240 XH	10.5	8.6	4.8	6.3	240
280 XH	11.0	9.0	5.0	6.6	280
325 XH	11.5	9.5	5.2	6.9	325
350 XH	12.0	9.9	5.4	7.1	350
405 XH	12.5	10.3	5.6	7.4	405
440 XH	13.0	10.7	5.8	7.7	440
485 XH	13.5	11.1	6.0	8.0	485



20646 NUANCE

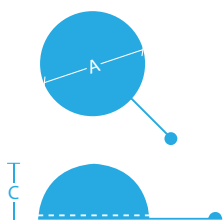
20674 ENHANCE



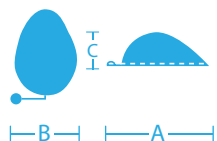
REF	A WIDTH	B HEIGHT	C PROJECTION	D LVC	VOL
cm					cm ³
225 LO	11.0	12.0	3.4	5.6	225
260 LO	11.5	12.5	3.6	5.8	260
295 LO	12.0	13.0	3.8	6.1	295
340 LO	12.5	13.5	4.0	6.4	340
380 LO	13.0	14.0	4.2	6.7	380
425 LO	13.5	14.5	4.4	7.0	425
475 LO	14.0	15.0	4.6	7.3	475
530 LO	14.5	15.5	4.8	7.6	530
180 MD	9.5	10.5	3.6	5.4	180
210 MD	10.0	11.0	3.8	5.6	210
240 MD	10.5	11.5	4.0	5.8	240
275 MD	11.0	12.0	4.2	6.1	275
310 MD	11.5	12.5	4.4	6.4	310
350 MD	12.0	13.0	4.6	6.7	350
400 MD	12.5	13.5	4.8	7.0	400
450 MD	13.0	14.0	5.0	7.3	450
500 MD	13.5	14.5	5.2	7.6	500
560 MD	14.0	15.0	5.4	8.0	560
615 MD	14.5	15.5	5.6	8.4	615
190 HI	9.0	10.0	4.2	6.0	190
215 HI	9.5	10.5	4.4	6.2	215
250 HI	10.0	11.0	4.6	6.4	250
285 HI	10.5	11.5	4.8	6.6	285
320 HI	11.0	12.0	5.0	6.9	320
365 HI	11.5	12.5	5.2	7.2	365
410 HI	12.0	13.0	5.4	7.5	410
460 HI	12.5	13.5	5.6	7.8	460
510 HI	13.0	14.0	5.8	8.1	510
570 HI	13.5	14.5	6.0	8.4	570
635 HI	14.0	15.0	6.2	8.7	635
215 XH	9.0	10.0	5.0	6.5	215
250 XH	9.5	10.5	5.2	6.8	250
290 XH	10.0	11.0	5.4	7.1	290
330 XH	10.5	11.5	5.6	7.4	330
375 XH	11.0	12.0	5.8	7.7	375
420 XH	11.5	12.5	6.0	8.0	420
465 XH	12.0	13.0	6.2	8.3	465
520 XH	12.5	13.5	6.4	8.6	520

TISSUE EXPANDERS FOR BREAST RECONSTRUCTION

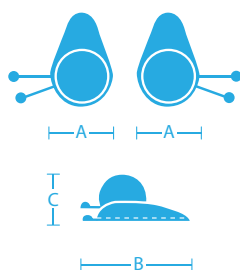
		VOL				
		mL	cm			
			A WIDTH	B HEIGHT	C PROJECTION	
20789-XXXG						
	320	10.9	8.6	6.7	Anatomical Inferior Pole	
	390	12.0	9.1	6.8		
	470	12.9	9.7	7.0		
	540	13.9	10.2	7.4		
	690	14.9	11.0	7.7		
840	16.0	12.2	8.8			
20759-XXXG						
	350	12.5	10.5	6.4	Anatomical Inferior Pole	
	450	12.7	11.0	6.9		
	550	13.1	12.1	7.5		
	650	13.5	12.8	7.8		
	770	14.1	13.2	8.7		
20769-XXX						
	200	9.2	10.2	4.0	Anatomical Superior Pole	
	300	11.0	12.0	4.3		
	400	12.3	13.3	4.5		
	500	13.3	14.3	4.7		
	600	14.0	15.1	5.0		
	700	14.9	15.8	5.6		
800	15.3	16.5	6.0			
206749G-XXX						
	185	8.8	9.9	5.1	Anatomical Superior Pole	
	215	9.3	10.3	5.3		
	255	9.8	10.9	5.6		
	300	10.3	11.3	5.8		
	385	11.2	12.4	6.2		
	435	11.8	12.9	6.4		
	475	12.3	13.4	6.5		
	545	12.8	13.8	6.8		
20799-XXXAG						
	310	10.9	12.9	5.1	Anatomical Double Chamber	
	390	12.2	13.9	5.2		
	470	12.7	14.8	5.5		
	570	13.7	15.9	5.7		
	620	14.3	16.4	5.8		
	780	15.1	17.4	6.5		
20809-XXX						
	200	9.6		4.1	Round	
	300	10.6		5.0		
	400	11.2		5.5		
	500	12.2		6.2		
	600	13.2		6.5		
	700	15.0		6.1		
	800	15.2		6.4		
	900	15.2		7.6		
	1000	15.3		8.4		



ROUND TEXTURED BREST EXPANDER WITH REMOTE PORT				
REF	VOL cm ³	A	B	C
20800-050	50	6.2		3.6
20800-100	100	7.9		2.8
20800-200	200	9.6		4.1
20800-300	300	10.6		5
20800-400	400	11.2		5.5
20800-500	500	12.2		6.2
20800-600	600	13.2		6.5
20800-700	700	15		6.1
20800-800	800	15.2		6.4
20800-900	900	15.2		7.6
20800-1000	1000	15.3		8.4



NATURAL SHAPED TEXTURED BREAST EXPANDER WITH REMOTE PORT				
REF	VOL cm ³	A	B	C
20760-200	200	10.2	9.2	4
20760-300	300	12	11	4.3
20760-400	400	13.3	12.3	4.5
20760-500	500	14.3	13.3	4.7
20760-600	600	15.1	14	5
20760-700	700	15.8	14.9	5.6
20760-800	800	16.5	15.3	6



DOUBLED CHAMBERED TEXTURED BREAST EXPANDERS, WITH TWO REMOTE PORTS				
REF	VOL cm ³	A	B	C
20730-320	320	10.5	15	5.6
20730-470	470	11.6	15.5	5.8
20730-600	600	12.3	16.3	6.5
20730-850	850	14.1	17.6	6.7

PRODUCT REPLACEMENT PROGRAM

Silimed Product Replacement Program (SPRP) for Polyurethane implants.

SILIMED offers a program of lifetime coverage. In the event of the Polyurethane implant envelope rupturing, a new SILIMED Polyurethane implant will be made available to the surgeon through Device Technologies.

Silimed also offers the replacement for ten years in the case of capsular contracture (Baker grade III or IV), rotation and implant displacement.

The surgery has to be performed by a qualified surgeon in accordance with the instructions for use of SILIMED implants and following current surgical techniques. This program does not cover the costs of the surgery and hospital costs associated with the replacement, it only offers to replace the Polyurethane implant.

After the operation, the patient needs to fill out the personal registration form at our website www.silimed.com.br. They will receive a message confirming their registration in the form of a printable personal registration card, which should always be carried by the patient.

Once a year the patient will be asked to fill out an updated registration on our site. This renewed register will contain some easy questions for them to answer regarding their satisfaction and well-being. On filling out the update, the patients SPRP will be extended for another year. The program will only be continued after we receive each year the renewed registration duly filled out.

The SPRP does not cover a new SILIMED Polyurethane implant in the following cases:

- Capsular contracture Baker grade I or II.
- The SPRP is only valid if the SILIMED Polyurethane Implant was placed in virgin tissue (no capsular or scar tissue).

- The SPRP is only valid if postoperatively wound healing was inconspicuous with cell integration into the Polyurethane foam.
- The SPRP is not valid in relation to surgical complications such as hematoma, seroma or infections.
- The capsular contracture Baker grade III or IV must be documented with MRI by the surgeon before the implant exchange.

SILIMED operates the SPRP voluntarily and reserves the right to cancel or modify it at any time. The program is only valid in countries to which SILIMED supplies its products.



Manufacturing facility.



Measuring shell thickness.



Removing air bubbles.

Silimed Product Replacement Program (SPRP) for Gel filled implants.

SILIMED offers a program of lifetime coverage in the event of the implant envelope rupturing. A new SILIMED breast implant will be made available to the surgeon through Device Technologies.

The surgery has to be performed by a qualified surgeon in accordance with the instructions for use of SILIMED implants and following current surgical techniques. This program does not cover the costs of the surgery and hospital costs associated with the replacement; it only offers to replace the Gel Filled implant.

After the operation, the patient needs to fill out the personal registration form at our website www.silimed.com.br. They will receive a message confirming their registration so in the form of a printable personal registration card, which should always be carried by the patient.

Once a year the patient will be asked to fill out an updated registration on our site. This renewed register will contain some easy questions for them to answer regarding their satisfaction and well-being. On filling out the update, the patients SPRP will be extended for another year. The program will only be continued after we receive each year the renewed registration duly filled out.

The SPRP does not cover a new silicone-gel breast implant in the following cases:

- Damage to the implant before or during implantation;
- Damage to the implant due to trauma;
- Damage to the implant during mammography;
- Damage to the implant during open or closed capsulotomy;
- Damage caused during surgical intervention.
- SILIMED operates the SPRP voluntarily and reserves the right to cancel or modify it at any time. The program is only valid in countries to which SILIMED supplies its products.

SILIMED 



EuroSurgical

Merrow Business Park, Guildford, Surrey GU4 7WA

T: +44 (0)1483 456007 F: +44 (0)1483 456008

E: sales@euroSurgical.co.uk W: www.euroSurgical.co.uk